

BMN

Bluegrass Music News



FEATURES SUMMER 2017

- Profile: W. Harry Clarke
- Orff is for Everyone
- Appy Hour 2017
- Commercial Music: A Paradigm Shift in Music Education
- Practical Tips for Beginning Music Teacher Mentoring

To us, every
moment matters.



You create the music, we'll do the rest.

since
1981

we've been working
with directors to create
incredible student travel
experiences.



Bob Rogers Travel

over
5,000

custom trips planned
to destinations in the
U.S. and abroad,
no two alike.

bobrogerstravel.com

Making Moments That Matter

Call: (800) 373-1423

for 35 years

Bluegrass Music News

CONTENTS

Messages From KMEA

- 3 From the President Terry Thompson
- 5 Editor's Notes George R. Boulden
- 7 From the Executive Director John Stroube

Feature Articles

- 10 A Man for All Seasons: W. Harry Clarke Dr. Ben Hawkins
- 13 Orff is for Everyone Brittany Rust
- 16 Practical Tips for Beginning Music Teacher Mentoring
. Jennifer Greene, Christopher Baumgartner, Edward Hoffman III
- 18 Appy Hour 2017 Mike Sekelsky
- 21 Commercial Music: A Paradigm Shift in
Music Education Michael Parsons

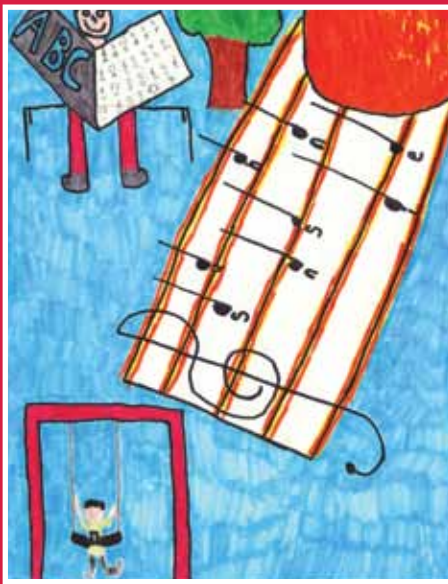
News and Information

- 8 2017 Journal Cover Contest Results
- 25 2016–17 Performance Assessment Results

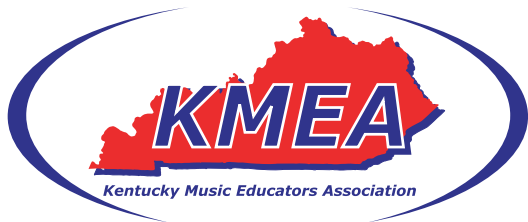
Forms

- 37 KMEA All-State Photo Order Form
- 38 KMEA All-State CD/DVD Order Form
- 39 Advertisers

The cover of this issue shows the winning entry in the 2017 Bluegrass Music News Journal Cover contest. For more information about the winner, see Editor's Notes on page 5.



See page 8 for three additional cover art submissions that earned runner-up recognition.



KMEA: Kentucky Music Educators Association
P.O. Box 1058, Richmond, KY 40476-1058
1-859-626-5635

NAfME: The National Association for Music Education
1806 Robert Fulton Drive, Reston, VA 20191
NAfME Toll-Free Telephone: 1-800-366-3768

NAfME President: Denese Odegaard
Southern Division President: Sara Womack
KMEA President: Terry Thompson



Illustration by Morgan Timberlake

Printed by JOHNSON PRESS OF AMERICA

The Kentucky Music Educators Association is a voluntary, non-profit organization representing all phases of music education in schools, colleges, universities, and teacher-training institutions. KMEA is a federated state association of the National Association for Music Education. KMEA/NAfME membership is open to all persons actively interested in music education.

Inquiries regarding advertising rates, closing dates, and change of address should be sent to Melissa Skaggs, P.O. Box 1058, Richmond, KY 40476-1058; tel: 859-626-5635; fax: 859-626-1115; email: melissa@kmea.org. Articles and reports should be submitted to the editor, George R. Boulden; email: George.Boulden@uky.edu

Bluegrass Music News is published in fall, winter, spring, and summer. Annual subscription: \$15.00. Individual copies are \$5.00. Subscription for members of KMEA is included in the unified NAfME/KMEA membership dues.

EKU SCHOOL OF MUSIC



JAZZ COMBO,
BLUEGRASS, CHOIR,
GUITAR, OPERA, STEEL BAND,
BRASS CHOIR, MARCHING BAND

COME EXPLORE WHAT WE HAVE TO OFFER

859-622-3266 | MUSIC.EKU.EDU

From the President

TERRY THOMPSON



THE NEW NORMAL

A few weeks ago the *Washington Post* wrote a story that focused on the political climate in Washington DC these days. They named it “The New Normal,” and it was really about how statements from politicians might be true, and might NOT be true, and how the reporters have to dig deeper than ever before to find the true story. Their conclusion was that this way of doing business in Washington is the way it is going to be for a while.

As I grow older I find that many body parts don’t work the same way they used to. I busted up the cartilage in my knee about thirty years ago playing softball with my band kids. It has not bothered me too much through the years, but in the last year and a half or so it has started hurting, which led to a limp, which led to my foot hurting, which led to my hip hurting and the limp becoming more pronounced. As I have dealt with doctors and physical therapists and makers of shoe inserts and others along the way, the question I always ask is, how long will it take for this to heal, or get better, or go away all together? Some of them say, “Well, I don’t know.” Some give me a range of time. But some tell me “well, this could be as good as it is going to get.” In other words, the NEW NORMAL.

As a new teacher I was pretty sure I knew what to do. As I prepared my groups for large group assessment (back then known as “festival”) I became frustrated over receiving ratings of “II” yearly. After two years in Indiana, then two years in Carroll County, and then two years in Greenup County, nothing but a “II”! It was becoming normal, as my ears were hearing mistakes the judges would point out that I would NOT have heard prior.

And then, things changed. I got a rating of “III”. And that REALLY hurt. And I REALLY didn’t appreciate that. It was likely the best thing that ever happened to me. It made me take a LONG look at my teaching style, my knowledge, and especially other groups who were getting a “I”, or “SUPERIOR” rating. What were they doing that I was not. I began to question myself and what I was giving the kids on a

daily basis in the way of a musical experience. I changed the way I approached music, what was good and what was not so good. I began to seek help from more experienced and more accomplished teachers, asking them to come in and work with my groups and lend their knowledge to the process.

I tell you this because I BELIEVE IN THE EXPERIENCE OF ADJUDICATION. What the KMEA Assessment experience offers to each middle school and high school performing ensemble is an important part of a comprehensive music education. I would MUCH rather have a panel of adjudicators assess my teaching ability than a principal who knows absolutely nothing about music, how we teach, what language we use, or the procedures we go through to get the students to perform on the highest level.

I had a teacher tell me one time he didn’t NEED a group of adjudicators looking over his shoulder telling him what to do. He already KNEW what to do. After hearing his group, I would have had to disagree.

Even if you don’t want a rating, you can participate in KMEA Large Group and Solo & Ensemble Assessment for “Comments Only.” I heard Dr. Brant Karrick, Director of Bands and NKU, say one time... “The human brain can hear a wrong note eight or nine times, and then it sounds right to you.” It is important to get others to listen and help you hear what you might be missing.

Summer break is important! Take some time and walk away from the job. Spend time with your OWN family. You spend so much with other families through the school year. This is a time for you to “reboot” your brain and your body, re-acquaint yourself with your spouse and pay attention to THEM. I often say to teachers “someone who has never DONE this job has no idea how tough it is.” I hope you have a great break and come back fresh and ready to do it all again next school year.

The University of Louisville School of Music announces a new Bachelor of Arts degree in Music and New Media, beginning Fall 2017.

The 21st-century is one in which the overwhelming majority of cultural projects rely on digital media at all stages of production and presentation. Digital media facilitates immersive, multimedia experiences that inform, enrich and transform our lives. The **Music & New Media** program is designed to prepare students for careers in music and new media arts that emphasize presentation, performance, and research with technology, including audio & video production for multimedia communications, music recording, audio & video post-production, sound engineering, sound design for film & gaming, sound art, sound & image research, public performance, and computer music composition.

UNIVERSITY OF
LOUISVILLE

SCHOOL OF MUSIC

University of Louisville | School of Music Admissions | Louisville, KY 40292 | 502.852.1623 (direct)
502.852.0520 (fax) | gomusic@louisville.edu | louisville.edu/music | facebook.com/uoflmusic

The University of Louisville is an equal opportunity institution.

Editor's Notes

GEORGE R. BOULDEN



"[Kids] don't remember what you try to teach them. They remember what you are."

—Jim Henson

By the time you read this I hope you are well into your summer break. Please take this time to recharge your batteries and spend time with family and friends. Maybe you have an idea for a new hobby or activity that you can start this summer and will stay with you through the year? Personally speaking, my hobby of landscaping around our home has helped me to relax and reflect on ideas, goals, and issues that have come up over the years. I have solved many problems while mowing the yard, or moving plants around. Regardless, enjoy your summer and I wish you the best as you begin to think about your plans and aspirations for the 2017–18 school year.

•••

Do you have a story to share? I would love to hear from you. Please send your comments and articles via email, george.boulden@uky.edu. Criteria for writing an article can be found below and at the KMEA website, www.kmea.org/bgmn. I hope you will take a moment to consider writing something for your state association journal.

•••

If you are a fan of Facebook be sure to visit the *Bluegrass Music News* page and hit the "Like" button. I have posted videos and other media about music education as well as music advocacy and other topics related to our profession.

GUIDELINES FOR CONTRIBUTORS

FEATURE ARTICLES, LETTER, & NEWS ITEMS:

- Please use Microsoft Word, 12-point Times New Roman type, double-spaced, default (Normal) margins, no extra space between paragraphs or other special formatting.
- Musical examples, illustrations, or other figures should not be embedded in the text, but sent as separate PDF or Word files. Please label them carefully, and indicate in the text where they are to be inserted.
- Feature articles should be no more than 1500–2500 words.
- Include a recent headshot.

PHOTOS:

- Please use the highest resolution possible. Low-resolution photos do not print well in a magazine.
- To be considered for the cover, photos should be in orientation. It is helpful if there is space at the top of the photo above the visual center of interest to accommodate the magazine's masthead.

DEADLINES:

- Although later submissions are accommodated when possible, items should be received by the 25th of July, October, January, and April.



Congratulations to Morgan Timberlake, our 2017 *Bluegrass Music News* Cover Art Contest winner. Morgan is a rising senior at Pleasure Ridge Park High School in Louisville. She writes, "My artwork, LYRICAL SOUNDS, is a self-portrait. I'm representing a moment of crescendo. LYRICAL SOUNDS is an intaglio print embellished with tissue paper. The strips of color represent the power of music, and its ability to speak louder than words." Thanks also to her music teacher, Julia Green, and her art teacher, Cheryl Wilhoit, for sponsoring her entry.



Creative EXCELLENCE

For nearly 100 years the UK School of Music has helped musicians prepare for careers as performers, educators, scholars, and leadership positions both in and outside the field of music. Join us and experience new exciting opportunities to perform and study on the world's stage through our internationally-recognized faculty and programs.

DEGREE PROGRAMS

Music Education (BMME, MM, PhD)

Music Performance (BM, MM, DMA)

Music Liberal Arts (BA)

Musicology/Ethnomusicology (MA, PhD)

Music Theory (MA, PhD)

Music Therapy (MM)

Conducting (MM, DMA)

Composition (MM, DMA)

Sacred Music (MM)

Rank I in Music Education and Certificates in Music Theory Pedagogy, Musical Theatre, Vocal Music Pedagogy and Orff Schulwerk

From the Executive Director

JOHN STROUBE



One reason publishing deadlines are important is the timeliness of advertisements and announcements in the publication. I'm going to write on the basis that we will produce this summer issue on time, and that some people will see it before the 2017 Arts Education Summit on June 14 and 15, produced by the Kentucky Coalition for Arts Education and the Kentucky Department of Education. Thanks to generous support from the Kentucky Arts Council, the KDE, and volunteer help at the organizational level, the cost of registration is an unbelievable \$30.00 per attendee. That would be a bargain if it were only a one-day event, but that fee covers both days.

If you haven't noticed, this event, in its second year, will be held in what for many KMEA members are the familiar environs of the Galt House in downtown Louisville. What may be unfamiliar to out-of-towners is how pleasant downtown Louisville can be in June, especially in the evening around suppertime. Keep that in mind if you are considering attending.

The opportunity for enjoyable walks to dinner notwithstanding, the core purpose of the Summit, this year entitled *Arts Education: Building Capacity for Great Arts Programs*, is to equip attendees with discipline-focused pedagogy in breakout sessions, and to spend time on big-picture areas such as strategy, policy, advocacy, and state accountability. The planners are seeking to provide a palatable balance.

Big names at this year's summit include the Americans for the Arts' Arts Education Program Manager Jeff Poulin and Kentucky Commissioner of Education Dr. Stephen Pruitt. Among other engaging presentations, we will enjoy the work of several performing arts students from Louisville's Western Middle School, a visual and performing arts magnet.

If things have gone well with our production schedule, and if you read this shortly after the journal arrives in the mail, it's not too late to attend. A conference description, online registration, and lodging reservation are available at kmea.org/art-education-summit/. I encourage pre-registration to speed things up for you

upon check-in. By this date, hotel availability is not guaranteed, but with luck it will be a quiet week at the Galt House and you will be able to get a room if you need one!

Speaking of the Coalition, as most of you know, it had a busy spring communicating with legislators and voters about the re-configured Senate Bill 1, a sweeping reform to education responding to the re-authorized federal Elementary and Secondary Schools Act, this version called the Every Student Succeeds Act (ESSA). One month after Senate Bill 1 was signed into law the KCAE collected observations from arts teachers as to whether they observed any initial positive or negative effects on programs in their schools or districts. This is part of the ongoing mission of the Coalition, to keep track of what the trends are in schools across the state, and to propose solutions to any problems detected. Over time since its creation, the Coalition has been able to gain the ear of some state-level decision-makers, people who can only help if they are told what help is needed.

We will similarly "ask around" as the new accountability system comes into play, including and especially the School Profile, that part of the system within which schools' provision of non-tested subject areas is reported.

School may be out earlier this year than ever, as far as any of us remember, but the KMEA office keeps plugging along. We are here daily, and we await the opportunity to help you in any way we can.



The 2017 Bluegrass Music News Journal Cover Contest had the theme "Where Words Fail, Music Speaks." The winning entry is on the cover of this issue, and the contest had three runners-up. They are, left to right:

Nathan Smith, a 5th grader at Grant's Lick Elementary, Alexandria. (Music and art teacher—Melissa Little)



Fancy Bratcher, an 8th grader at Barren County Middle School, Glasgow. (Music teacher—Casey Powell; Art teacher—Marla England)

Fancy had this to say about how she created her artwork:

I took a canvas and a pencil so I could sketch on the canvas an idea I wanted to do. Then I took some black paint and painted some words and notes. After that, I painted different colors where the paint looks like the words are falling.



Layla Hanien, a 10th grader at Bryan Station High School, Lexington. (Music teacher—Kristine Lyon; Art teacher—Ronda Safi)

Layla had this to say about her artwork:
My drawing relates to the topic, "Where Words Fail, Music Speaks," because the two people are crying but aren't speaking. They're understanding each other through their music.

MUSIC IS YOUR LIFE

Music is our life, too. We want to share our passion with you. Give us a call. Drop us a line. Look us up.

(270) 789-5237
music@campbellsville.edu
www.campbellsville.edu/music

**There's Still Time to Audition!
Contact Us to Schedule a Date**



School of Music | 1 University Drive, UPO 792 | Campbellsville, KY 42718

WKU Western Kentucky University
in Bowling Green

Summer String Institute



WKU Summer String Institute (SSI) is a concentrated week of master classes, group instruction, orchestral study, concerts, and musical enrichment for violin, viola, cello, and bass students.

July 24–28, 2017 / WKU Campus

ENROLL IN ONE OF THE FOLLOWING PROGRAMS

Twinklers (Ages 4 & up) / Half-Day *BEGINNERS WELCOME!*
Young Musicians (Elementary – High School) / Full-Day



WKU

wku.edu/music

DEPARTMENT OF MUSIC

*Diversified musical experiences
for everyone on campus!*

Audition and admissions
information can be found
at wku.edu/music

Bachelor of Arts

*Bachelor of Music in Education
and Performance*

Music Minor

*Master of Music in Conducting
(Teacher/Leader), Music Education
(Teacher/Leader), and Pedagogy*



A Man for All Seasons: W. Harry Clarke

BY DR. BEN HAWKINS

Most Kentucky music educators are familiar to one degree or another with, if not the man himself, at least the name of W. Harry Clarke. But Harry has served music education in Kentucky for so long, and in so many ways, that he has helped many people who don't even know his name. I wish to share some thoughts about my good friend and colleague Harry Clarke in part so that more of those people will come to know his name, and the enormous positive influence he has exerted over the course of the past half-century.

I am moved to take this step at this moment because on a recent chilly, gray spring evening, I had the great pleasure of participating in an event put together by Harry, one that well symbolized the man, musician, and teacher. Beyond that, my conversation with my wife Cyndee afterward made me realize that I have had the chance to know aspects of Harry's life and character that are likely unfamiliar to most of our colleagues, even those whose lives have intertwined with his for decades. In order for more people to gain a full appreciation of the magnitude of Harry's achievements, I think these dimensions should be more widely circulated.

I can't claim to recall the specific occasion of our first meeting, but Cyndee and I got to know Harry soon after we moved to Lexington in 1985. By that time, Harry was already an institution in the area and in KMEA. Having migrated from his native Mississippi to Central Kentucky to accept a position at Eastern Kentucky University, Harry began doctoral study at the University of Kentucky in 1965, first serving as a graduate teaching assistant. He was appointed Director of Bands in 1968, and held that title for 21 years. From 1989 until 2003, he served as Director of the UK School of Music. After stepping down from that position, he continued to pursue his passion for training young teachers until he (finally) retired from UK in 2011—forty-six years after his matriculation in graduate school there.

Frankly, I find myself exhausted by the mere recounting of a career of that duration and intensity. But Harry Clarke is a man of rare energy. He soon found that time weighed more heavily on him than he could tolerate. So, calling on skills doubtless

accumulated during his long tenure negotiating the pitfalls of academic politics, he decided to run for a spot on the council of the Lexington-Fayette Urban County Government.

As my family happened to live in the district that Harry aspired to represent, he asked me to work on his campaign committee. I didn't contribute a whole lot, but I did attend some campaign brainstorming sessions and knocked on a few hundred doors, talking to constituents and leaving brochures. I recall with pleasure the happy atmosphere at the victory party following the reporting of the results.

I had campaigned for Harry because I knew he was the sort of person who would represent his fellow citizens in the fairest, most non-partisan manner possible. And I was right—that is precisely what he did. He answered calls, returned emails, and advocated for pothole repairs and other necessary services that are taken for granted until they are neglected. Unfortunately, when Harry ran for reelection two years later, a newcomer to the district with access to large sums of outside campaign money and a mastery of hot-button buzzwords narrowly defeated Harry.

In characteristic fashion, Harry did not sulk or speak bitterly about the winning candidate, but looked for other ways to serve his neighbors. As of this writing, he still busies himself attending various board meetings and generally looking for ways to get good things done, and to help people gain access to the services they need.

But it was not his prominent role as a band director, arts administrator, or county council member that fully enabled me to appreciate the depth of Harry Clarke's humanity. It was (cue James Earl Jones voice, *a la* "Field of Dreams") *baseball*. Specifically, Little League Baseball.

For while Harry was building a seemingly infinite list of professional accomplishments, he was working just as hard in his role as husband to Mary Beth and father to their son Matthew, now a successful architect in New York. When our own, now adult sons, Jay and Turner, got involved in Little League, I discovered that one of the most respected coaches in our league was none other than Harry Clarke. Harry had started coaching when Matthew, who is slightly older than the

Hawkins boys, played, and he continued to do so after Matthew had passed the age of eligibility for Little League. Another parent told me that Harry had constructed a batting cage in the basement of the Clarke home to teach Matthew the fine art of hitting, so I asked him if he would work with Jay. Not surprisingly, Harry, an astute student of baseball, put his well-honed teaching skills to good use in this new medium.

Little League coaching is not the most glamorous way a person can invest his or her time, and one of my vivid memories is that of Harry Clarke, invariably the first person out on the field on Saturday morning after an overnight downpour, running the wet-vac, sweeping the puddles, and spreading the Mule Mix (drying material) so that the foul lines and batters' boxes could be lined.

As laudable as all of these accomplishments are, none of them can top the one that led to the event mentioned earlier in this essay. Upon his retirement, Harry decided to resurrect his horn-playing skills. Upon his acceptance of the UK band job in 1968, Harry had given up a chair in the then-fledgling Lexington Philharmonic. He did not play again until after his retirement, forty-three years later. (Forty-three YEARS!) At that point, he started taking lessons from David Elliot, the renowned UK professor Harry had hired early in his own tenure. Harry had not been required to perform a horn recital during his



undergraduate years, and after he began to regain the proficiency of his younger self, he decided that he should put on a truly “senior” recital.

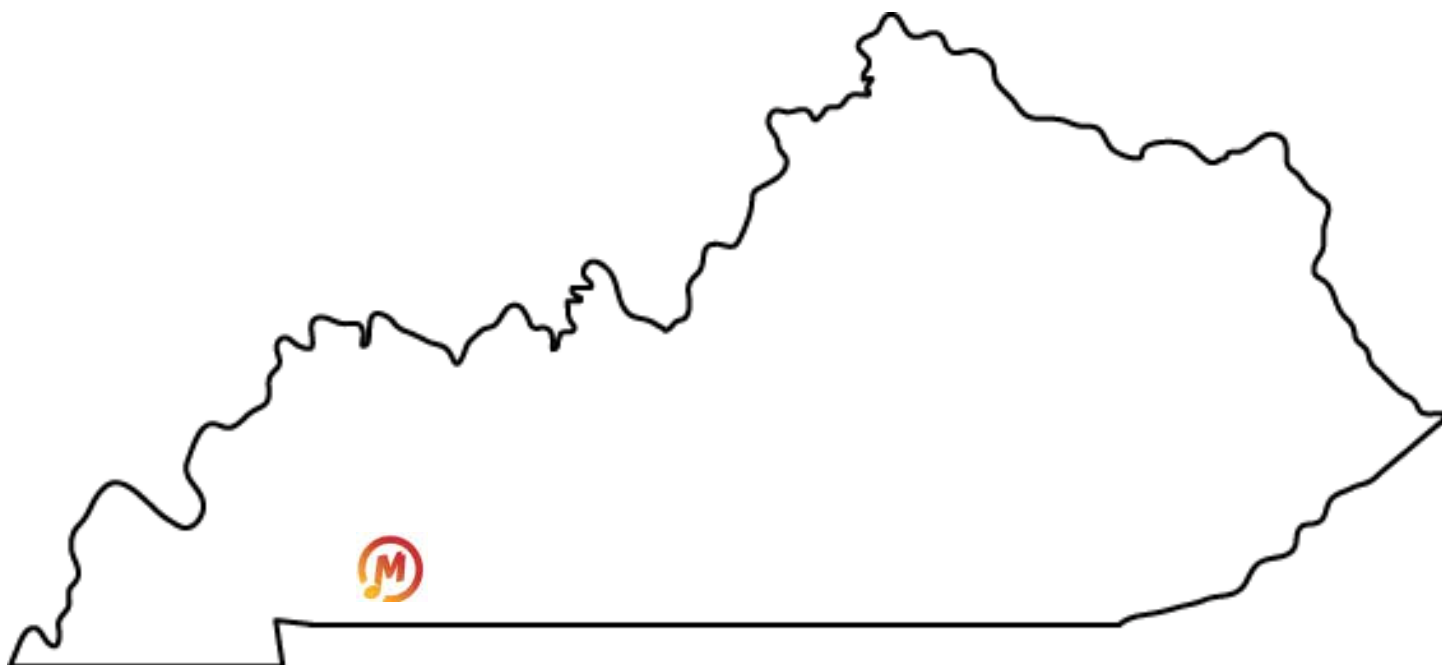
I was in attendance at that first recital two years ago, and I was astonished at how well Harry played. I was even more amazed at his third recital, the event referred to above. He performed a Mozart horn concerto with an orchestra composed of friends and a few other professionals, as well as a Trio for oboe, horn and piano by Reinecke, and four horn quartets of Reicha. Harry played the leading role in all of these pieces, which together ran over an hour in length.

This would be a commendable display of stamina for a young professional performer. For a man nearing eighty years of age, who spent more than half a lifetime away from his instrument, it defies description.

So, here's to you, Harry Clarke: a man for all seasons. You have been everything a man could be expected to be: husband, father, friend, colleague, teacher, musician, coach, advocate for good government—in short, a true servant leader. You, my friend, have touched all of the bases. Long may you flourish.

Dr. Ben Hawkins, bhawkins@transy.edu, serves as Professor and Program Director of Instrumental Ensembles at Transylvania University.

Kentucky's newest 28-year-old
music store!



We're reinventing what a music store should be.
1003 Skyline Drive · Hopkinsville
800-733-7529
www.shopmusiccentral.com



Orff is for Everyone

BY BRITTANY RUST

As a young teacher, I have been surprised by how all-consuming my “teacher life” truly is. I have learned that teaching is not just a job, it is a lifestyle. It is challenging, tiresome, frustrating, and incredibly rewarding. I know that this is not a groundbreaking discovery, but it is still pretty shocking to me. When I was an undergraduate student, I remember thinking, “Teaching will be so fun. My students and coworkers will adore me, and I will teach everyone to love music. I am going to be the greatest middle school band director ever.” Then reality hit. After graduation, I applied for seventy-five different jobs (no, I am not exaggerating), the majority of which were elementary music positions. The middle school jobs that I had dreamed about were few and far between. I had five interviews and two job offers. I ended up with an intermediate school music position in Scottsville, KY.

I began my first year with vigor, creating what I thought would be the most incredible lesson plans anyone had ever seen. However, I found that most of my plans were not really that incredible. A great deal of what I was doing as a new teacher was try, fail, and try again. While I was having a blast teaching, I was also realizing that college had mostly prepared me to be a band director. I knew everything there was to know about band, but not so much about how to be an effective elementary music teacher.

Elementary teachers do not get enough credit. They pour their hearts into their lessons, making sure that every intricate detail and activity will be stimulating, fun, and educational for their students. Before becoming a general music teacher, I had honestly thought elementary teaching would be a “piece of cake” kind of job. I burned brightly my first year, and just about burned out, until I decided to get my Orff level one certification.

I had heard about Orff-Schulwerk in a college course long before, but I did not remember much about it, “Something to do with all those xylophones that I inherited from my predecessor,” I thought. This was initially the reason I chose Orff over other methods.

I arrived at University of Kentucky for my first level of Orff training. After the first day, I was in a complete and total whirlwind. Everything I thought I knew about

teaching children music had been completely flipped upside down, inside out, and any other way imaginable. My head was spinning with the information. I have never in my life been more inspired than I was during that first week of classes. I found myself going home each day writing, creating, arranging, and lesson planning.

One of the biggest lessons learned from level one of Orff was how to arrange music for children. This was something that I had assumed would be easy, however, there were several moments in my first year of teaching when I had arranged a piece of music and found that my students had a great deal of trouble actually learning to play it. I did not understand why until I did my level one training. Learning to arrange in a way that young students can be successful is absolutely invaluable information to all music teachers.

My second takeaway from level one classes is that the instruments I had in my “instrumentarium” are tools. They are not something on which I should teach a unit and then vacate until the next year. They are musical tools that should be pulled out and used as often as possible. Orff allowed me to abandon the idea of a “xylophone unit,” or “recorder unit.” Even though I only see my classes once a week, I am now able to use the instruments effectively on a regular basis, and mix them with other instruments and activities.

Once I completed the first level of Orff, I went back to my classroom to apply what I had learned. I was in one of those situations where I had a myriad of wonderful ideas and plans, but I was not quite sure how to carry them out successfully. You see, level one was just the introduction. Instructors pour the information on you and basically say, “Go forth and try things.” The creative chaos in my head was making it difficult to develop a cohesive lesson plan in the Orff style, but I tried anyway. The products I had during my second year of teaching were Orff-like and fun, but a little sporadic and unfocused. I knew that I needed to go back and get my level two training the next summer. I decided to apply for the KOSA scholarship and was very excited to learn I had actually received it. I was over the moon with the thought of what fun would be in store during the second level Orff workshop.

Similar to the first level, I was immersed in wonderful Orff materials and hands-on experiences during level two. The greatest knowledge gained this time around was simply how to create a cohesive lesson plan in the Orff style. Cohesive is the key word, because as I described, I had been attempting to teach in the Orff style, but my results were a bit messy.

There are three fabulous ladies that I met during my Orff levels one and two training. Each of these women has inspired me in different ways. My level one ensemble teacher, Betsy Kipperman, exposed me to so much Orff material and so many experiences that my head was spinning. She got my creative juices flowing just in time for the new school year to begin. She also taught me how to arrange music in a way that children could understand it and actually perform it on the instruments I had available.

Sarah Richardson, the movement instructor, motivated me to allow my body to be free. Movement was, and still is at times, not exactly something that I am entirely comfortable with. However, I have learned that my students connect most easily to the movement activities I do in class. These activities are less restrictive, and with fewer rules, students move more freely and are more open to their creativity. As a teacher, I gain more insight about my students as individual musicians simply by watching how they move in different activities.

Cindy Hall, my level two ensemble teacher, broke it all down for me. After a year of head spinning creativity, Cindy showed me how to take an idea and morph it into an Orff lesson plan or unit. She has inspired me in such a way that I see music in everyday items. For example, I was out shopping one day and ran across some hula hoops on sale. They were 90% off at the Dollar Store toward the end of the Fall season.

I thought, "Hmm...I feel like there is definitely some music in these hoops." That was all it took! I spent \$3.00 on 12 hula hoops, and I have done several different movement activities and ensemble lessons with them in my classroom. This is what is so incredible about being an Orff teacher, suddenly, everything has music: mundane objects, books, architecture, paintings, anything. All of these items become tools in the music classroom.

Orff is valuable to anyone in any music teaching situation. You will learn how to teach with no equipment, or how to teach with anything under the sun. It will take everything you thought you knew about music and flip it inside out. Orff is truly a method that every music teacher should know more about, regardless of the age group of the students. I have used many of the skills and techniques gained from my Orff levels, not only in my own classroom but also with my choirs and in the private lessons that I give to brass players. Orff has the ability to transform your paradigm as a music teacher and I encourage everyone to give it a try.

Brittany Rust, brittany.rust@allen.kyschools.us, is the music instructor at Allen County Intermediate Center where she teaches 4th through 6th grade general music classes, chorus, and has an afterschool Orff ensemble. She is also KMEA's 3rd District K-5 chair and Honors children's choir coordinator.

Brittany attended Murray State University where she received a Bachelor's degree in Music Education with an instrumental emphasis. Her primary instrument is the French horn. She is currently finishing up a Master's degree in Music Education and Teacher Leadership at Western Kentucky University where she will graduate this May. She has completed two levels in the Orff-Schulwerk method at the University of Kentucky.

Royal Music Co., Inc.



WE CAN TURN YOUR WISH-LIST INTO A DREAM COME TRUE!

830 FAIRVIEW AVE BOWLING GREEN, KY 42101

ROYAL-270-842-9435 800-633-6156

OPUS-270-843-6800



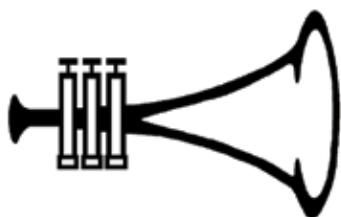
Larry

**"Proper Planning Prevents
Poor Performance"**

*We work our magic all
summer long! Be sure to
get your instruments in
for servicing early so we
can have them ready
when you need them!*



Ed



Opus Horn Repair

Practical Tips for Beginning Music Teacher Mentoring



BY JENNIFER L. R. GREENE, FAYETTEVILLE-MANIUS SCHOOL, NY
CHRISTOPHER M. BAUMGARTNER, UNIVERSITY OF OKLAHOMA
EDWARD C. HOFFMAN III, UNIVERSITY OF MONTEVALLO

Beginning a teaching career as a music educator is an exciting endeavor. Despite an overwhelming enthusiasm to begin work in the school classroom, novice music teachers also must focus on their own continued learning and professional growth. Having a mentor who understands how beginning teachers think and develop can impact how new teachers strategize solutions to a variety of issues during their first years. The Supporting Beginning Music Teachers ASPA (Area of Strategic Planning and Action)—a workgroup of P–12 and higher education music teachers from the Society for Music Teacher Education (SMTE)—focuses their efforts on describing “effective models of mentoring, induction, professional development, and continued support programs for new music teachers” (<http://smte.us/aspas/supporting-beginning-music-teachers/>). As part of this mission, we offer a window into the developmental stages of beginning teachers so that experienced music educators can effectively mentor the next generation of music teachers.

One of the most prominently-researched developmental theories in music education is the teacher concerns model proposed by Fuller and Bown (1975). As suggested by this model, teachers move through three concern-based stages (self, task, impact) as they experience teaching for the first time. Although these concerns appear in distinct stages, teachers may progress (and regress) at varying rates, especially when they encounter new situations. Additionally, it is important to understand that these developmental stages are not discrete, but may overlap, occur simultaneously, and/or flow back and forth throughout a beginning teacher’s initial years. Recognizing these varying concerns will allow mentors to tailor their support to best assist mentees in progressing toward the final stage of teacher development.

An awareness of the issues common among new teachers may allow mentors to assist their mentees in moving more quickly through the first stage of concerns (Holson & Heyse, 1990). “Do I belong here? Am I capable enough to teach these students?” Questions like these reflect this initial stage of self-concerns (Fuller & Bown, 1975). A certain empathy might be

fostered if mentors reflected upon and revisited their own first years of teaching. By sharing stories of their own early experiences, mentors might better develop a sense of trust and understanding with their mentees, helping to ease mentees concerns and opening a reciprocal dialogue. Isolation is a particular issue for many music educators—having someone who has “been there” and understands the problems and pitfalls often encountered in early-career teaching may provide unique and specialized support for beginning music teachers. We suggest meeting outside the school environment (e.g., coffee shop) to foster this type of non-judgmental relationship between mentor-mentee pairs in a more relaxed atmosphere.

Once past the early concerns about themselves, new teachers may have a tendency to focus on task-oriented concerns (Holson & Heyse, 1990). During this second stage of Fuller and Bown’s (1975) proposed development, beginning educators ask questions such as “How do I teach this concept?” or “How can I maintain class control?” Considering the ever-changing landscape of education, day-to-day teaching may seem at times overwhelming for early-career music teachers. Some novices also may be teaching outside their concentration area (e.g., band directors teaching choir), adding to the level of task-oriented concerns. Music mentors might best assist these and all new teachers by helping mentees prioritize the issues at hand—in particular, helping mentees navigate between the curricular/pedagogical goals (in the classroom) and administrative/procedural tasks (outside the classroom). The former would be best supported by a music-specific mentor, and the latter a building-specific mentor. If an in-house music mentor is unavailable, it might be beneficial for a mentee to have two separate mentors—one to offer support in each of these professional areas.

The value-added assessment (VAM) measure is a common element of teacher evaluation models in use today. Great attention is given to how teacher behaviors impact student growth and achievement in the classroom. However, new teachers may not be ready to focus on these third-level, impact-oriented concerns (Fuller & Bown, 1975). Such questions as “How do my

students learn?” or “What do I want my students learn from this lesson, and how do I measure this learning?” are common among more experienced early-career teachers. It may take time to mentor beginning music educators toward this pattern of thinking and reflection. Based on our experiences preparing and mentoring music educators, new teachers may feel heightened levels of stress being forced into this developmental stage before they have achieved some success in the first two levels (self and task concerns). Again, having the mentor prioritize for the mentee may prove to be a helpful intervention. The mentor could choose one pedagogical area on which to focus, then lead the mentee (through carefully constructed leading questions) toward thinking about student learning in that particular area. Every mentee will progress differently in each curricular area—mentors must be keenly aware of which stage their mentee “inhabits” so they are prepared to provide support at that level before guiding the mentee forward.

Understanding the personal and professional needs of beginning teachers may better prepare veteran educators to effectively mentor current and future generations of novice music teachers. The teacher concerns model proposed by Fuller and Bown (1975) offers a framework for guiding mentees through three concern-based stages of beginning teacher development—self, task, and impact. Naturally, veteran music educators are uniquely positioned to support beginning music teachers as they navigate all stages. Where building-level partnerships between non-musical mentors and novice music teachers are common practice, however, consider a second mentor who is a music teacher to address content-specific needs. Figure 1 lists several national organizations of musicians and music educators that offer mentorship programs, as well as text resources specific to music mentoring. In this manner, administrative and procedural concerns (stage two task-oriented) are supported locally, while stage one self-oriented and stage three impact-oriented concerns are confronted with the guidance of an expert in the content area and profession.

Fuller, F. F. & Bown, O. H. (1975). *Becoming a teacher*. In K. Ryan (Ed.), *Teacher education* (74th Yearbook of the National Society of Education, pp. 25–52). Chicago, IL: University of Chicago Press.

Olsen, D. G., & Heyse, K. L. (April, 1990). *Development and concerns of first-year and reentry teachers with and without mentors*. Paper presented at the annual meeting of the American Educational Research Association, Boston, MA.

FIGURE 1

INTERNET AND PRINT RESOURCES FOR MUSIC-SPECIFIC MENTORING

American Choral Directors Association

<https://mentoring.acda.org/>

American String Teachers Association

<https://www.astaweb.com/>

National Band Association

<https://nationalbandassociation.org/mentor/>

Tau Beta Sigma

<http://www.tbsigma.org/mentor.html>

Great Beginnings for Music Teachers: Mentoring and Supporting New Teachers

Colleen Conway

MENC, 2003

Handbook for the Beginning Music Teacher

Colleen Conway and Thomas Hodgman

GIA Publications, 2006

Handbook for the Music Mentor

Colleen Conway, Michael V. Smith, and

Thomas Hodgman

GIA Publications, 2010

The Music Teaching Artist's Bible: Becoming a Virtuoso Educator

Eric Booth

Oxford University Press, 2009

Jennifer L. R. Greene, JGreene@fmschools.org, is a band director at Fayetteville-Manlius High School in Manlius, NY where she directs the Concert Band, coaches several chamber ensembles, and teaches music theory.

Ted Hoffman is Associate Professor of Music and Director of Music Education at the University of Montevallo (AL).

Christopher M. Baumgartner is Assistant Professor of Instrumental Music Education at the University of Oklahoma where he teaches undergraduate and graduate courses in music education, undergraduate conducting, supervises music student teachers, and directs the New Horizons Band.

This is a reprint of an article that appeared in the April 2017 issue of the NYSSMA School Music News.



Appy Hour 2017

BY MIKE SEKELSKY

In January of 2017 the Missouri Music Educators Association offered an inaugural technology session titled “Appy Hour” at their annual conference meeting. The goal was to provide a safe environment where app users and enthusiasts could share unique music apps that they use in the classroom, as well as updating attendees regarding developments of older apps. The success of the inaugural events suggest that this should become an annual session for the technology area at our professional development conference.

Most of the apps were demonstrated using an iPhone projected to the screen through the digital projector. There are several adapters that will connect Apple devices to digital projectors using HDMI. Following is an example of one of the adapters available on Amazon.com or through the Apple store for about \$49: **Lightning Digital AV Adapter**

Similar adapters exist for Android phones and other mobile devices. Unlike the iPhone and iPad, Android phone manufacturers do not include HDMI output as a default for all their devices. I am currently using a Samsung S6 Edge. Researching a user blog that eventually led back to a Samsung representative, I learned that the S6 does not have HDMI output. Make sure you check your device capabilities before purchasing an adapter. One of the more common Samsung (Android) adapters is: **Samsung ET-H10FAUWESTA Micro USB to HDMI**

Following is a list of apps that were presented and discussed at Appy Hour 2017. The apps are listed in order of presentation at “Appy Hour” with basic information provided allowing the reader to research each app online.

Staff Wars Live

Available: Google Play Store (\$.99) and iTunes Store for both iPhone and iPad (\$.99)

Description: Staff Wars is a game designed to help beginning and intermediate musicians learn, practice and woodshed the note names of the treble, alto and bass clefs.

Hokusai Audio Editor

Available: iTunes Store for both iPhone and iPad (Free)

Description: Hokusai is a multitrack audio editor for iPhone, iPad or iPod touch. Record or import a track, and make it sound the way you want it to.

Theory Lessons by Music Theory.net: Tenuto

Available: iTunes Store for both iPhone and iPad (\$2.99)

Description: Tenuto is an enhanced version of the exercises and calculators for your iPhone, iPad, and iPod touch. Each of the 20 exercises and five calculators uses a friendly touch interface that is fully optimized for all screen sizes across all devices.

Rhythm Sight Reading Trainer

Available: iTunes Store for both iPhone and iPad (\$2.99)

Description: Improve your sight reading with immediate feedback of timing accuracy. Carefully graduated levels from simple to professional allow you to start at your best level and improve at your own pace, more rapidly than on your own instrument. Practice anytime and anywhere.

Fingering

Available: iTunes Store for both iPhone and iPad (\$5.99)

Description: Pick a written note (touch the staff) and have the fingering displayed and concert pitch played. A touch of a button reveals the note on the piano. Play a concert pitch on the piano, and have that pitch’s fingering displayed. A touch of a button reveals the transposed note written on the staff.

Harmony Cloud

Available: iTunes Store for both iPhone and iPad (\$9.99)

Description: Understanding harmony is an essential skill for any musician. Harmony is the springboard that elevates melodies to their full emotional potential.

Steve Reich’s Clapping Music

Available: iTunes Store for both iPhone and iPad (Free)

Description: Steve Reich’s Clapping Music is a game that improves your rhythm by challenging you to play Steve Reich’s ground-breaking work – a piece of music

performed entirely by clapping. Tap in time with the constantly shifting pattern, and progress through all of the variations. If you slip up or your accuracy falls too low, it's game over.

Bandmate Chromatic Tuner

Available: Google Play Store (Free) and iTunes Store for both iPhone and iPad (Free)

Description: Featured at The Midwest Clinic 2016 - Bandmate is the only chromatic tuner that displays the note you play on a music staff.

SuperMetronome GrooveBox Pro – Drum Machine

Available: iTunes Store for both iPhone and iPad (\$6.99)

Description: The best metronome for iPhone, is also an intuitive and powerful groove box / drum machine with high definition sounds and an amazing tempo practice tool, now with Audiobus compatibility!

piaScore – Smart Music Score Reader (pdf reader, page turner, etc.)

Available: iTunes Store for both iPhone and iPad (Free)

Description: Here comes an application which solves EVERY SINGLE problem that music performers have ever encountered. No more trouble of carrying loads of scores and looking for your favorite one.

GoodNotes 4

Available: iTunes Store for both iPhone and iPad (\$7.99)

Description: GoodNotes lets you take beautiful handwritten notes and annotate PDF documents. The handwritten notes are searchable and are created using a pioneering vector ink engine. Thanks to iCloud sync, your documents in GoodNotes will synchronize between your iPad and iPhone automatically.

MobileSheets Free Music Reader (Android alternative for GoodNotes 4)

Available: Google Play Store (Free)

Description: MobileSheetsPro is the premier sheet music reader for Android tablets. It frees you from having to lug around books and binders, and gives you the ability to access any score in your library in seconds. It also comes with a number of powerful features for musicians including: - Multiple modes of operation including two pages side-by-side, half page turns, and vertically scrolling pages.

Scanner Pro - PDF document scanner app with OCR

Available: iTunes Store for both iPhone and iPad (\$3.99)

Description: Scanner Pro is the best app for quickly scanning and saving a digital version of a paper document. Scan any papers, ranging from a receipt to multi-page documents. Scanner Pro will automatically detect borders, correcting distortion and geometry. Share, email and upload your perfect scans. Use OCR to convert any scan into a text.

Doceri Interactive Whiteboard

Available: iTunes Store for both iPhone and iPad (Free)

Description: Combining screencasting, desktop control, and an interactive whiteboard in one app, you'll never have to turn your back to the class or audience again. Create a lesson or presentation, insert images, save and edit your project and record a screencast video you can easily save or share. Doceri does it all!

Amazing Slow Downer

Available: Mac and Windows versions (www.ronimusic.com)(\$49.95), iTunes Store (\$14.99)

Description: Amazing Slow Downer by Roni Music was one of the first software programs available to slow down music. Like most programs available, Amazing Slow Downer (ASD) can speed up or slow down the tempo without changing the pitch. Tempo or speed change settings range from 20% to 150%. Pitch change settings are done in increments of a semitone and range 12 semitones or one octave in each direction. ASD also has a built-in equalizer and a loop editor.

Sight Reading Factory

Available: iTunes Store for both iPhone and iPad (Free); Supports recent versions of the most popular web browsers: Chrome, Safari, Firefox, Internet Explorer, and Microsoft Edge. Supports these browsers on Windows, Chromebooks, Mac OS X/macOS, and Linux. We also support mobile browsers iOS Safari and Android Chrome.

Description: Sight Reading Factory makes practicing the important skill of sight reading quick, easy, effective and fun! This app composes music instantly and on-demand, providing musicians with a virtually unlimited supply of sight reading material. There are multiple levels of difficulty and the exercises can even be customized exactly to the needs of the musician.

SpeakBeat Metronome

Available: iTunes Store for both iPhone and iPad (Free)

Description: SpeakBeat Metronome: the only one that counts! A fully customizable voice metronome, supporting multiple time signatures, sub-beats, a variety of available voices and more, all for free!

Harmonize

Available: iTunes Store for both iPhone and iPad (Free)

Description: An app anyone can enjoy with which you learn to have perfect and relative pitch. Especially suited to those learning the chords of just intonation. This app is beloved by many, from those who want to be good at karaoke to brass band and orchestra members.

PlayAlong Flute (...or other instruments)

Available: iTunes Store for both iPhone and iPad (Free)

Description: PlayAlong Flute listens as you play your instrument, guiding you through the melody of a selected song. https://www.youtube.com/watch?v=hqyx82G_4OY. -Choose to play any of the 250+ songs and scales from our music library.

iReal bPro

Available: Google Play Store (\$12.99); iTunes Store for iPhone, iPad, and Mac (\$12.99)

Description: iReal Pro offers an easy-to-use tool to help musicians of all levels master their art. Our app simulates a real-sounding band that can accompany you as you practice, and also lets you collect chord charts from your favorite songs for reference.

Dr. Michael Sekelsky, sekelsky@ucmo.edu, serves as the Technology Chair for the Missouri Music Educators Association. He is completing his third year as Associate Dean of the College of Arts, Humanities, and Social Sciences at the University of Central Missouri. He will return to a former position as interim Department Chair of Music for the 2017–2018 academic year. In his role as Associate Dean, Dr. Sekelsky oversees the Student Technology Fee budget, computer upgrades for the college, and classroom technology.

This is a reprint of an article that appeared in the Summer 2017 issue of *Missouri School Music*.

Professional Quality Instruments and Unparalleled Service.

With a team of professional musicians, Miles Ahead Music provides 1 on 1 attention and quality instruction for beginners to advanced students.

When you determine it's time for your student to advance to a step up instrument you can choose from our inventory of exceptional brands.

At Miles Ahead Music we are the regions best source for music students, teachers and professionals.



RENTALS



REPAIRS



SALES



LESSONS

MILES AHEAD MUSIC

Rent and Shop Online 24/7
milesaheadmusic.net

808 Lyndon Lane, Suite 103
Louisville, KY 40222 **502-479-3772**

2130 Lexington Rd., Suite A
Richmond, KY 40475 **859-624-5955**



Commercial Music: A Paradigm Shift in Music Education

BY MICHAEL PARSONS

Commercial Music Education has revolutionized our program at Briarcrest Christian School, and it has allowed our students to experience higher levels of musical excellence than ever before. Seven years ago I created a commercial music ensemble at Briarcrest that focused on singing and playing all styles of popular music including jazz, rock, country, blues etc. This ensemble became known as SoundScape. SoundScape quickly became one of the premier performance groups at Briarcrest, and it has been recognized both regionally and nationally for its outstanding level of musical performance and studio recordings. By creating a rigorous and educationally sound curriculum that focuses on ear training, reading proficiency, music theory, improvisation, ensemble playing techniques, and exposure to recording technology, we have been able to pull students into our program who would never have considered a traditional high school music ensemble. This approach to music education requires students to exist on what Bloom's Taxonomy refers to as the "creative" level of learning, utilizing advanced aural and cognitive skills in a demanding and holistic way on a daily basis. Commercial music education has enhanced every facet of our program from marching band to our symphonic wind ensemble, and it has provided our students with greater opportunities in music.

HOW COMMERCIAL MUSIC SAVED OUR PROGRAM

When I joined the faculty at Briarcrest Christian School eight years ago, I inherited a band program that was struggling to stay afloat. In fact, enrollment in our program had hit an all-time low with less than 4% of our school participating in our high school instrumental music program. My first task was to diagnose the problem and find a solution, fast! That's when I stumbled upon a YouTube video of one of our non-band students playing guitar at the legendary B.B. Kings Blues Club on Beale Street. I was blown away by this kid's musical ability. I asked myself, "why isn't he in band?" The answer was more than obvious; our program did not entice him. That video made me realize that we were losing out on an opportunity to involve musically inspired kids because our curriculum was limited to traditional instrumental ensembles. This caused me to consider a radical new approach to high school music education. A paradigm shift was on the horizon.

Before I proceed, I want to preface this section by saying that the foundation of our program is still our traditional ensembles. Our marching and concert bands remain the cornerstone of our program, and they are where most of our students find their musical identity. Commercial music has not replaced these core



Photo by Nathan Armstrong

ensembles; on the contrary, it has saved, enhanced, and strengthened them.

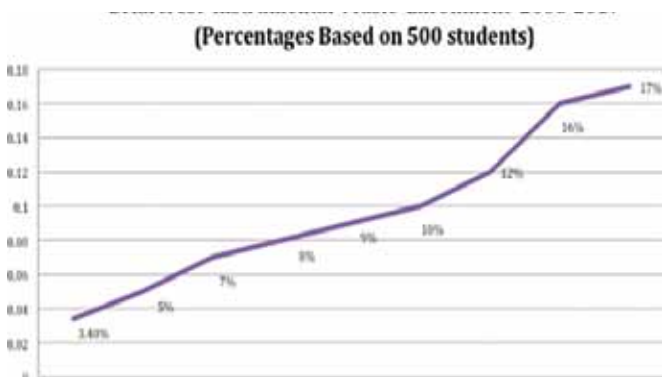


Photos by Dana Goode

THE PARADIGM SHIFT

I took that guitar student, along with several others that I had recruited and formed our program's very first commercial music ensemble. This group, which would eventually be known as "SoundScape," included a drummer, singers, guitarists, a keyboardist, and a horn section. These kids learned and performed music that was indigenous to our school's culture. This included rock, blues, R&B, soul, and jazz. What started as a desperate search for something to save our program turned into, I believe, a more comprehensive, holistic, and effective approach to music education.

Why commercial music? For us, commercial music was indigenous to our school's culture and, therefore, took off in a way that our more traditional ensembles did not. What worked well twenty-five years ago was actually holding us back. Why? The culture of our school changed while our department did not. We needed to offer something that every kid could relate to, be inspired by, and get excited about. Once we adopted this new approach and began incorporating commercial music into our program, we saw immediate and consistent growth (see the enrollment chart below). Commercial music was indigenous to our school's culture and has taken off like wildfire! Now, instead of trying to convince kids to join band, we have students transferring to our school just to be a part of our program. One particular student drives over one hour each way just to be here.



The most important reason for commercial music is that it provides our students with an all-encompassing and holistic approach to music education. When I began developing our curriculum, I quickly realized that the techniques involved in teaching this style address every aspect of the National Standards for Music Education. In fact, techniques such as ear training, composition, orchestration, improvisation, musical analysis, and the world of recording technology are naturally woven into commercial music education pedagogy. Very few times, if ever, do my traditional ensembles spend time composing, orchestrating parts, playing by ear, analyzing the harmonic structure and form of a piece, or recording in a studio.

In Part 2 of this blog, I will go into specific pedagogical approaches and techniques that I use to teach our students. This is perhaps the most compelling section because it explains how to use music theory, ensemble techniques, recording technology and other methods to enhance students' musical education. Below are a few links that show what this style of music education looks and sounds like.

VIDEO EXAMPLES

- <https://www.youtube.com/watch?v=nNSTyKIgbFM>
- <https://www.youtube.com/watch?v=WuAapWiR0VQ>
- <https://www.youtube.com/watch?v=IQ1IXokwZY0>

AUDIO RECORDINGS

- <https://soundcloud.com/briarcrestsoundscape-535659835>
- <https://itunes.apple.com/us/album/man-in-the-glass/id653166304>
- <https://itunes.apple.com/us/album/equilibrium/id953373418>
- <https://itunes.apple.com/us/album/illumination/id981294145>
- <https://open.spotify.com/artist/1E1uEfmTHaNVo5PyV4LJ4>

HOW TO TEACH AND IMPLEMENT COMMERCIAL MUSIC INTO YOUR PROGRAM



In the Classroom

Song selection... When I talk with educators about implementing commercial music into their program, the first question I am often asked is “where do you find music?” My response is often met with a puzzled look when I tell them, “my students.” Unlike my traditional ensembles where the music is chosen by me, the magic of our commercial music program is that the students have creative investment in the repertoire. Here’s how we do it...

Step one – I have my students submit song suggestions on a **Collaborative Spotify playlist** that we all share and are able to access. This is a FREE resource that does not require a subscription. Once my students have posted their suggestions, I then listen through all of the songs and choose the ones that:

1. Are accessible to our group
2. Have appropriate lyrics
3. Fit into the performance that we’re putting together

I allow my students to have creative investment by suggesting the material. My job is to guide them through that process and to then make the final decision of what we will perform. This is a great way of getting kids to take ownership over what they’re learning. Once the set list has been decided, I then create a performance playlist from which they write out their parts.

Sheet Music... The second question that I’m often asked is, “Where do you find sheet music for your group?” The answer may seem counterintuitive, but it’s the same as before... “My students.” All of my students learn how to read standard notation. I believe that reading is important for any musical education. However, developing great aural skills along with understanding music theory is also essential. Popular music is an incredible medium for developing aural skills which reinforce the students’ reading abilities. Instead of purchasing parts (or transcribing them myself), I teach my students how to learn their parts by ear and then notate them using a FREE notation software called MuseScore. Often times, my horn section will pick out their part at the piano and then have to transpose it for trumpet or sax. Listening critically for their part in a particular song, learning the part by ear, and finally notating that part (often times having to transpose) is a musically holistic experience for the student. I take the same approach with my vocalists when learning harmony parts. These students learn to identify pitch intervals and can create harmonies based on the melody and chord progression.

I take a slightly different approach with members of

our rhythm section when it comes to notating parts. Instead of using standard notation, I have them analyze both the harmonic and the formal structure of every song that we learn and create what we call “charts.” This requires the students to use their understanding of written theory along with their aural skills to give themselves enough information to recreate their own unique parts for a song. This is an example of one of the “charts” that my students wrote for a song that we are currently working on...

Somebody Like You by Keith Urban

Intro : (8bars)
High drone pad on “D” 2 bars (sustain over entire intro)
Banjo Lick, 4 on the floor 4 bars / Bass and Full Kit enter on M. 5
Verse 1 (driving but soft)
Acoustic, Bass, Palm-Muted Electric, Warm Pad
D G D
[////][////][////][////][////][////][////][////]
A G D
[////][////][////][////] REPEAT

IN PERFORMANCE

Commercial Music Education opens up a wide range of performance possibilities for students, ranging from school concerts to touring opportunities. SoundScape performs at our school, at other schools around the Memphis area, at regional music festivals, county fairs, and takes a week-long performance tour across the Gulf Coast. These performances provide our students with one of the most positive musical experiences imaginable. This style of music generates a strong response from the audience, which is a huge positive reinforcement for our students. After a great performance where the crowd is dancing, singing along and even creating a mosh-pit, our students are often met by enthusiastic fans begging them to sign autographs! This “rock-star” experience does more than boost the students’ egos; for some, it provides a sense of self-confidence. Some of the proudest moments of my career have been to see very shy and introverted kids break out of their shell after one of these performances. I have witnessed lives change before my eyes. This is a dream come true for a lot of kids and is certainly an experience that few are ever afforded.



SONG WRITING/ RECORDING / MUSIC VIDEOS

Another unique aspect of commercial music education is the area of song writing and recording technology. By empowering the students to take ownership over their music with song selection, learning parts by ear and then notating them, song-writing is a natural progression in the curriculum. I often have my students start with “stream of thought” writing, where they will write anything that pops into their head. We eventually whittle their random thoughts down to a specific concept or lyrical “hook” and go from there. Here is a link to a few examples of songs that my students have written...

soundcloud.com/briarcrestsoundscape-535659835/sets/illumination

Recording can be as simple or as complex as you choose, but it is probably the most valuable and educationally fruitful thing that we do. I learned a long time ago that the recording studio is not a glamorous place. Recording can be an incredibly humbling experience because recordings do not lie. If your horns are out of tune, it's obvious. If your vocalists are pitchy, there's no hiding it. Or if your drummer can't play in time with a metronome, you simply can't do anything. Such a brutally honest environment, which at times can be intimidating, can be the most beneficial thing for young musicians. SoundScape records professionally produced albums annually. This type of production is a nine-month project that consumes hundreds of after-school hours. I am convinced that, while a professional production may not be for everyone, even a simple recording project done on a laptop using free software (such as Garage Band) can still be incredibly beneficial for students. Recordings provide true feedback for the musicians and allows them to improve with each listen.

Music videos provide another opportunity to teach and inspire students. I teach my students that their number one job as performers is to communicate to their audience. Often times, high school students can appear insecure on stage despite being highly skilled

musicians. In an effort to help teach my students how to better communicate what a song is trying to convey, I decided to produce two music videos with them this year (2017). These projects proved to be an incredibly effective way of teaching them how to communicate visually to their audience. An upbeat tune such as “Feeling Good” shouldn't be performed with a stoic posture. Instead, the students have to learn how to visually communicate the message of the song which is one of joy and freedom. Once we started filming, the students were able to see how their body language either helped or hindered the message of the song. Without much instruction, the students almost intuitively understood what to do. Here's a link to that video...

<https://www.youtube.com/watch?v=nNSTyKIgbFM>

Songwriting, studio recordings, and music videos all serve the purpose of teaching and inspiring music students on multiple fronts. These activities reveal areas of strength and weakness in the students' abilities and allows them a unique perspective in which to become better skilled musicians. In addition, they allow greater opportunities for the students to express their individual creativity.

Michael Parsons serves as the Director of Instrumental Music at Briarcrest Christian School. Michael directs the Briarcrest Symphonic Band and Wind Ensemble, the “Mighty Sound of the Saints” Marching Band, Middle and High School Worship Bands, and two of Briarcrest's premier commercial music ensembles, “SoundScape” and “76-South.” Michael holds a Master's of Music Degree in orchestral conducting along with a Bachelor's of Music Degree in performance, both from the University of Memphis.

For more information, please contact me directly at mlparsons@briarcrest.com or follow me on Facebook at www.facebook.com/michael.lee.parsons

This is a reprint of an article that appeared in the Spring 2017 issue of the *Illinois Music Educator Journal*.

2016–17 Performance Assessment Results

BAND

Webster Co. HS Concert III Zachary Buskill I
West Hopkins School C David Moss CO

District 1 – James Gregory, Manager

School	Class	Director	Rating
Ballard Co. MS	C	Heather Dipasquale	I
Ballard Memorial HS	III	Heather Dipasquale	I
Caldwell Co. HS	IV	Daniel Thomas	II
Caldwell Co. MS	C	Courtney Ringel	I
Calloway Co. HS	IV	Derek Jones	I
Calloway Co. MS	C	Kevin Suiter	I
Crittenden Co. HS	III	Jacob Carroll	I
Graves Co. MS	C	Craig Fuqua	I
Heath MS Beginning	A	Steven Page	I
Heath MS Concert	C	Steven Page	I
Lone Oak MS 7th/8th	C	Kara Connell	I
Lyon Co. HS	II	Spencer Sullivan	II
Lyon Co. MS Beginning	A	Spencer Sullivan	II
Lyon Co. MS Concert	C	Spencer Sullivan	II
Marshall Co. HS Symphonic	IV	Ronnie Payton	I
Mayfield HS	IV	Darrin Abren	I
Mayfield MS 7th/8th	C	Ginny Burchett	I
McCracken Co. HS WE	V	Lovell/Ray	I
McCracken Co. HS Sym.	IV	Lovell/Ray	I
Murray HS Symphonic	IV	Tim Zeiss	I
Murray MS	C	Beth Stribling	I
Paducah MS 8th	C	Lindsey Williams	I
Paducah Tilghman HS	IV	James Gregory	I
South Marshall MS	B	Ryan Weldon	III
Trigg Co. HS	IV	Andrew Mroch	I
Trigg Co. MS	B	Brandon McKinley	I

District 2 - Ed & Katie Hauser, Managers

School	Class	Director	Rating
Apollo HS Wind Ensemble	V	Chris Spivey	I
Apollo HS Concert	III	Spivey/Clark	I
Browning Springs MS	C	Cory Mullins	I
Burns MS 6th	A	Yonts/Clark	I
Burns MS 7th	B	Yonts/Clark	I
Burns MS 8th	C	April Yonts	I
College View MS 7th	B	Jed Manire	I
College View MS 8th	C	Jed Manire	I
Daviess Co. HS WE	V	DuWayne Dale	I
Daviess Co. HS Concert	IV	Karen Alward	I
Daviess Co. MS Concert	C	Dave Ruckdeschel	I
Dawson Spring HS	II	Andy Hall	I
Hancock Co. HS	III	Benningfield/Allen	I
Hancock Co. MS 7th	B	Allen/Benningfield	I
Hancock Co. MS 8th	C	Allen/Benningfield	I
Henderson Co. HS WE	V	Thomas/McManus	I
Henderson Co. HS Sym/Con	IV	Thomas/McManus	I
Henderson North MS	C	Alex Grimm	I
Henderson South MS Concert	C	Metzger/Sanchez	I
James Madison MS 7th	B	Emerson/Adams	I
McLean Co. HS Concert	III	Ryan Rue	I
McLean Co. MS Concert	C	Ryan Rue	I
Ohio Co. HS Concert	III	Lincoln Rowe	I
Ohio Co. HS Symphonic	IV	Lincoln Rowe	I
Owensboro Cath. HS Concert	III	E. Hauser/K. Hauser	I
Owensboro HS Symphonic	V	Barr/Klausing	I
South Hopkins MS	C	Tolliver/Grace	II
Union Co. HS Concert	III	Payton/Hettenhausen	I
Union Co. MS Concert	C	Kyle Payton	I

District 3 - David Graham, Manager

School	Class	Director	Rating
Adairville MS	C	Brittani Barnett	III
Allen Co.-Scottsville HS Con.	IV	J. Shawn Huff	II
Auburn MS 6th–8th	C	Mandy Beasley	I
Barren Co. HS Sym. Winds	V	K. Crowder/M. Crowder	I
Barren Co. MS 7th Beginning	A	M. Crowder/K. Crowder	I
Barren Co. MS 8th	B	M. Crowder/K. Crowder	I
Bowling Green HS Sym.	IV	Kevin Briley	I
Bowling Green Jr. HS 7th	B	Christi Shores	I
Bowling Green Jr. HS 8th	C	Kevin Briley	I
Butler Co. HS Symphonic	III	Ausbrooks/Pardue	I
Butler Co. HS WE	IV	Ausbrooks/Evans	I
Butler Co. MS 5th Beginning	A	Evans/Pardue	II
Chandler's MS	C	Renee Fultz	II
Christian Co. HS	III	Anthony Darnall	I
Christian Co. MS	C	Warren/Darnall	II
Drakes Creek MS 8th	C	Sheila Smalling	I
Eastside MS 7th	B	Susannah Taylor	I
Eastside MS 8th	C	Susannah Taylor	I
Edmonson Co. HS	III	John Woods	III
Franklin-Simpson HS	III	Ragland/Nash	II
Franklin-Simpson MS	C	Ragland/Nash	CO
Glasgow HS Scottie	IV	Jonathon Holmes	I
Glasgow MS Scottie	C	Jonathon Holmes	I
Graves Co. HS	IV	Richard Burchett	III
Greenwood HS Concert	III	Collar/Morrison	I
Greenwood HS WE	IV	Morrison/Collar	I
Henry Moss MS 8th	C	B. Graham/D. Graham	I
Hopkins Co. Cent. HS Concert	III	John Grace	II
Hopkinsville HS Symphonic	V	Peveler/Jones	I
Hopkinsville MS 7th/8th	C	Travis Miller	II
James Bazzell MS Beg/Inter	B	Huff/Cook	I
Lewisburg MS 6th–8th	C	Kevin Johnson	III
Logan Co. HS Symphonic	IV	David Dayton	I
Mad. N. Hopkins HS Concert	IV	Randy Adams	I
Meade Co. HS Concert	II	Lay/McGee	II
Meade Co. HS Symphonic	V	McGee/Lay	I
Metcalfe Co. HS	III	Tyler Fenwick	II
Monroe Co. HS	III	Crowe/Collins	II
Muhlenberg Co. HS	IV	Troy Stovall	I
Muhlenberg North MS	C	Jill Page	I
Muhlenberg South MS 7th/8th	C	Joel Watson	II
Olmstead MS	B	Danny Benson	III
Owensboro MS 6th	B	Kaitlin Calihan	I
Owensboro MS 7th	C	Jason Smith	I
Owensboro MS 8th	C	Jason Smith	I
Russellville HS Concert	IV	Brian Brown	II
Russellville MS 7th/8th	C	Brian Brown	II
South Warren HS Concert	III	Amy Spears	I
South Warren HS WE	IV	Chris Cecil	I
South Warren MS 8th	C	Spears/Cecil	II
Todd Co. Central HS	III	Williams/Carmichael	I
Todd Co. MS 7th/8th Inter.	C	David Carmichael	II
Warren East HS Symphonic	IV	Johnathan Cline	II
Warren East HS WE	V	Johnathan Cline	II
Warren East MS 7th	B	Cedrick Leavell	II
Warren East MS 8th	C	Cedrick Leavell	I

Performance Assessment Results, continued

District 4 - Brian Ellis, Manager				District 6 - Tom Mueller, Manager			
School	Class	Director	Rating	School	Class	Director	Rating
Bardstown HS	II	Matt Brown	I	Hebron MS 8th	C	Wendy Davidson	II
Bardstown MS 7th	B	Matt Brown	I	Henry Co. HS	III	Chip Anderson	II
Barren Co. HS Concert	IV	Crowder/Crowder	I	Henry Co. MS 7th/8th	C	Chip Anderson	II
Bloomfield MS 6th	A	T J Metcalf	I	Martha L. Collins HS 8th	C	Kevin Osborne	I
Bloomfield MS 7th	B	T J Metcalf	I	Martha L. Collins HS	IV	Kevin Osborne	I
Bloomfield MS 8th	C	T J Metcalf	I	North Bullitt HS	III	Jennie Kling	I
Breckinridge HS Concert	III	Ricky Dudgeon	I	North Bullitt HS	V	Jennie Kling	I
Breckinridge MS 8th	C	Ricky Dudgeon	II	North Oldham HS	III	Amanda Buchholz	II
Butler Co. MS 7th/8th	D	Jordan Evans	I	North Oldham HS	V	Amanda Buchholz	I
Campbellsville HS Winds	II	Zach Shelton	I	North Oldham MS 7th	B	Kyle Ray	II
Central Hardin HS Sym.	IV	Centers/Cantrell	I	North Oldham MS 8th	C	Kyle Ray	II
Central Hardin HS WE	VI	Centers/Cantrell	I	Oldham Co. HS	IV	Brad Rogers	I
East Hardin MS 7th	B	Matthew Baucum	I	Oldham Co. HS	VI	Brad Rogers	I
East Hardin MS 8th	C	Matthew Baucum	I	Oldham Co. MS 7th	B	Tony Wise	I
Elizabethtown HS Sym.	IV	Drew Tucker	I	Oldham Co. MS 8th	C	Tony Wise	I
Grayson Co. HS	V	A. Bell/A. Bell	I	Shelby Co. HS	IV	Ross Morgan	II
Grayson Co. MS 6th	B	Bell/Parker	I	Shelby East MS 6th	A	Tammy Oerther	I
Grayson Co. MS 7th	C	Parker/Bell	I	Shelby East MS 7th	B	Tammy Oerther	II
Grayson Co. MS 8th	D	Parker/Bell	I	Shelby West MS 6th	A	Brandon Etienne	I
Green Co. HS	III	Nathan Willoughby	I	Shelby West MS 7th	B	Brandon Etienne	I
Green Co. MS	C	Nathan Willoughby	CO	South Oldham HS	V	Ryan McAllister	I
Hart Co. HS Concert	IV	Ed Johnson	I	South Oldham HS	III	Ryan McAllister	I
James T. Alton MS Sym.	B	Byron Witham	I	South Oldham MS 8th	C	Robert Parker	II
Larue Co. HS	III	Patterson/Mora	I	Spencer Co. HS	III	Tara Alcorn	I
Larue Co. MS	C	Stephanie Mora	I	Spencer Co. MS 7th	B	Taylor Stampfer	II
Marion Co. HS	III	Daniel Beams	I	Spencer Co. MS 8th	C	Taylor Stampfer	I
Nelson Co. HS Concert	III	Damon King	I	Trimble Co. HS	III	Jonah Sawyers	II
New Haven and Boston MS	C	Shawn Robison	I	Trimble Co. MS 7th/8th	C	Jonah Sawyers	II
North Hardin HS Sym.	IV	Froedge/Reams	I	Zoneton MS 7th	B	Eve Witt	I
North Hardin HS Sym. II	III	Froedge/Reams	I	Zoneton MS 8th	C	Eve Witt	I
North Hardin HS WS	VI	Froedge/Reams	I	District 6 - Tom Mueller, Manager			
Old Kentucky Home MS 7th	C	Damon King	II	School	Class	Director	Rating
Old Kentucky Home MS 8th	C	Damon King	I	Beechwood HS Symphonic	V	Joe Craig	I
Stuart Pepper MS 8th	B	Aaron Lay	I	Beechwood MS 8th	C	Adam Proctor	I
T.K Stone MS	C	Evans/Tucker	I	Bellevue HS Concert	III	Michael Bishop	II
Thomas Nelson HS	IV	Shawn Robison	I	Boone Co. HS Symphonic	III	Daniel Barnhill	I
Washington Co. HS	IV	Scotty Burns	I	Boone Co. HS WE	IV	Daniel Barnhill	I
Washington Co. MS	C	Scotty Burns	I	Campbell Co. HS Sym.	IV	Little/Marotta	I
West Hardin MS	C	Laura Floyd	I	Campbell Co. HS WE	V	Little/Marotta	I
District 5 - Tony Wise, Manager				Campbell Co. HS Concert	II	Little/Marotta	I
School	Class	Director	Rating	Campbell Co. MS 7th	B	Stephen Dietsch	I
Anderson Co. HS	V	Patrick Brady	I	Campbell Co. MS 8th	C	Stephen Dietsch	II
Anderson Co. MS 7th	B	Patrick Brady	I	Conner HS Symphonic	IV	Chris Peterson	I
Anderson Co. MS 8th	C	Patrick Brady	I	Conner MS 7th	B	William Klopp	III
Bernheim MS 7th/8th	C	Shawn Webb	II	Conner MS 8th	C	William Klopp	II
Bullitt Central HS	IV	Rodney Stults	I	Dayton HS Concert	III	Steven Schwartz	CO
Bullitt East HS	III	Trevor Ervin	I	Dixie Heights HS Sym.	III	Jonathan Stites	I
Bullitt East HS	V	Trevor Ervin	I	Grant Co. HS Concert	III	Tim Dailey	II
Bullitt Lick MS 7th/8th	C	Meredith Patton	II	Grant Co. HS Symphonic	IV	Tim Dailey	I
Camp Ernst MS 7th	B	Tom Mueller	I	Gray MS 7th	B	Bill Kidwell	I
Carroll Co. HS	III	Brad Howard	II	Gray MS 8th	C	Bill Kidwell	I
Carroll Co. HS	V	Brad Howard	II	Highlands HS Concert	IV	Lori Duncan	II
Christian Acad. of Lou. 6th	B	Kristin Ungaro	I	Highlands MS Concert	C	Lori Duncan	II
Christian Acad. of Lou. 7th	C	Kristin Ungaro	I	Holmes HS Concert	III	Sarah Shamblin	I
Christian Acad. of Lou.	III	Matt Wooten	II	Holmes MS 6th	A	Frank Sloan	II
Christian Acad. of Lou.	VI	Matt Wooten	I	Holmes MS 7th	B	Frank Sloan	II
East Oldham MS 8th	C	Kevin Cox	II	Holmes MS 8th	C	Frank Sloan	II
Gallatin Co. HS	III	Scott Reed	II	Larry Ryle HS Honors WE	V	Bob Elliott	I
Hebron MS 7th	B	Wendy Davidson	I	Larry Ryle HS Symphonic	IV	Bob Elliott	I
				Lloyd Memorial HS WE	III	Jason Stolz	I
				Maurice Bowling MS 6th	B	Miles Fortner	I

Performance Assessment Results, continued

Maurice Bowling MS 7th/8th	C	Miles Fortner	I	Leestown MS 6th	A	Charles Weitkamp	I
Owen Co. HS Concert	III	Chad Rose	II	Leestown MS 7th	B	Charles Weitkamp	I
Pendelton Co. HS WE	IV	Matt Phillips	II	Leestown MS 8th	C	Charles Weitkamp	II
Pendleton Co. HS Concert	III	Matt Phillips	II	Lexington Trad. MS 6th	A	Kristi Broady	I
Phillip Sharp MS 7th/8th	C	Ian Insko	II	Lexington Trad. MS 7th/8th	C	Kristi Broady	I
RA Jones MS 7th/8th	C	Emily Castle	I	Morton MS 6th	A	Todd Chamberlain	I
Randall Cooper HS Concert	III	Brad Stewart	I	Morton MS 7th/8th	C	Todd Chamberlain	I
Randall Cooper HS WE	V	Brad Stewart	I	Paris HS	III	Eric Masters	II
Summit View Acad. 7th/8th	C	Carole Farris	II	Paul Dunbar HS Concert	III	Brian Morgan	I
Turkey Foot MS 7th	B	Jana Bromley	I	Paul Dunbar HS Symphonic	IV	Brian Morgan	I
Turkey Foot MS 8th	C	Jana Bromley	I	Royal Spring MS 7th	B	Kevin Bowling	I
Twenhofel MS 6th	A	Jim Daughters	I	Royal Spring MS 8th	C	Kevin Bowling	I
Twenhofel MS 7th Concert	C	Jim Daughters	I	SCAPA 6th/7th/8th	C	Robin Barker	I
Twenhofel MS Symphonic	C	Jim Daughters	I	Scott Co. MS 7th	B	Lindsay King	I
Williamstown HS Concert	IV	Chris Hedges	I	Scott Co. MS 8th	C	Lindsay King	I
Williamstown MS 7th	B	Chris Hedges	I	Southern MS 6th	A	Andrew Jarvis	I

District 7 High School - Allison Weitkamp, Manager

School	Class	Director	Rating	School	Class	Director	Rating
Baker Intermediate MS 6th	A	Matt Leedy	CO	Tates Creek HS	V	Aaron Cunningham	I
East Jessamine HS Concert	III	James Mock	I	Tates Creek MS 6th	A	Gay Begley	I
George R. Clark HS Concert	III	Michael Payne	I	Tates Creek MS 7th	B	Gay Begley	I
George R. Clark HS Symphonic	V	Michael Payne	I	Tates Creek MS 8th	C	Gay Begley	I
Henry Clay HS Concert	III	Bayerle/Kite	I	West Jessamine HS	III	Pat VanArsdale	I
Henry Clay HS Symphonic	IV	Jeff Bayerle	I	West Jessamine MS 6th	A	Matthew LaBarbara	II
Henry Clay HS Wind Ensemble	VI	Bill Kite	I	West Jessamine MS 7th/8th	C	Matthew LaBarbara	II
Lafayette HS Concert	III	Brian Lewellen	I	Winburn MS 6th	A	Diane Madden	I
Lafayette HS Symphonic	V	Dee Bishop	I	Winburn MS 7th/8th	C	Diane Madden	I
Lafayette HS Wind Symphony	VI	Chuck Smith	I	Woodford Co. MS 7th	B	Kelsey Collins	I
Lexington Catholic HS Concert	III	Allison Weitkamp	I	Woodford Co. MS 8th	C	Kelsey Collins	I
Scott Co. HS Concert	II	Greg Stepp	II				
Scott Co. HS Concert Winds	III	Greg Stepp	I				
Scott Co. HS Symphonic	IV	Greg Stepp	II				
Scott Co. HS Symphonic Winds	VI	Greg Stepp	I				
Warren Central HS Concert	III	David Graham	II				
Woodford Co. HS Symphonic	V	Michael Collins	II				

District 8 – John Johnson, Manager

School	Class	Director	Rating	School	Class	Director	Rating
				Ashland MS	B	Roger Doss	I
				Bath Co. HS Symphonic	IV	Robert Rawlings	I
				Bath Co. MS 7th	B	Jennifer Bowling	II
				Bath Co. MS 8th	C	Jennifer Bowling	II
				Berea Community HS	III	Matt Barnhill	I
				Berea Community MS 7th/8th	C	Matt Barnhill	I
				Blaine MS 7th/8th	C	Scott Smith	III
				Boyd Co. HS	V	John Johnson	I
				Boyd Co. MS	C	Kevin Christie	I
				East Carter HS	III	Logan Skidmore	I
				East Carter MS	C	Logan Skidmore	II
				Elliott Co. MS	B	John Fleck	II
				Elliott Co. HS	II	John Fleck	III
				Fairview HS	III	Kathryn Jackson	I
				Greenup Co. HS	II	Andrea Daniels	II
				Lawrence Co. HS	III	Scott Smith	II
				Lewis Co. HS	III	Matt Voiles	II
				Lewis Co. MS	B	Meagan Hammer	I
				Louisa MS 7th/8th	C	Scott Smith	III
				Mason Co. HS	III	Kurtis Carpenter	I
				McKell MS	C	Levi Dalton	I
				McNabb MS	B	Amanda Herceg	I
				Menifee Co. MS 8th	C	Dana Copeland	I
				Montgomery Co. HS Concert	III	Calvin Schmieg	II
				Montgomery Co. HS Symphonic	IV	Calvin Schmieg	I
				Morgan Co. HS	II	Greg Greene	II
				Nicholas Co. HS	III	Katie Safa	I
				Paul G. Blazer HS	V	Chris Whelan	I
				Raceland HS	IV	Allison Martin	II
				Rowan Co. HS Concert	III	Jenny Hipple	II

District 7 Middle School - Todd Chamberlain, Manager

School	Class	Director	Rating
Beaumont MS 6th	A	John Bowmer	I
Beaumont MS 7th	B	John Bowmer	I
Beaumont MS 8th	C	John Bowmer	I
Bondurant MS 7th	B	Stephen Keys	II
Bondurant MS 8th	C	Stephen Keys	II
Bourbon Co. HS	IV	Eric Hale	CO
Bourbon Co. MS 6th	A	Michael Stone	I
Bourbon Co. MS 7th/8th	C	Michael Stone	I
Bryan Station HS Concert	III	Shaun Owens	I
Bryan Station HS Symphonic	IV	Shaun Owens	I
Bryan Station MS 6th	A	Stephanie Frantz	II
Bryan Station MS 7th/8th	C	Stephanie Frantz	I
Campbell Jr. HS 7th	B	Trish Torline	I
Campbell Jr. HS 8th	C	Trish Torline	I
Crawford MS 6th	A	Sherry Baker	II
Crawford MS 7th/8th	C	Sherry Baker	I
Edythe J. Hayes MS 6th	A	Lois Wiggins	I
Edythe J. Hayes MS 7th	B	Lois Wiggins	I
Edythe J. Hayes MS 8th	C	Lois Wiggins	I
Georgetown MS 7th/8th	C	Kelly Diamond	I
Harrison Co. MS 6th	A	Julie Lucky	I
Harrison Co. MS 7th/8th	C	Julie Lucky	I
Jessie Clark MS 7th	B	Chris Strange	I

Performance Assessment Results, continued

Rowan Co. HS Symphonic	V	Jenny Hipple	I	Russell Co. MS 7th/8th	C	Curtis Ervin	II
Rowan Co. MS	C	Nick Diedrichsen	II	South Laurel MS Beginning	A	Michael Wooley	I
Russell HS	IV	Brent Hunt	I	South Laurel MS Concert	C	Michael Wooley	I
Russell MS	C	Brent Hunt	I	South Laurel MS Symphonic	C	Michael Wooley	I
West Carter HS	II	J. L. Hylton	II	Southern MS 7th/8th	C	Adam Hopper	II
				Taylor Co. MS Concert	C	Stephen Bishop	II
				Williamsburg MS 7th/8th	C	Zach Shannon	III

District 9 - Bob Saylor, Managers

School	Class	Director	Rating
Arlie Boggs MS	B	Robert Scheeler	II
Belfry HS	III	Mallory Williamson	I
Belfry MS	B	Kendrick Applegate	II
Harlan Co. HS	III	Kevin Shepherd	II
Harlan MS	C	Betsy Burkhart	I
Hazard HS	III	Dylan Behr	I
Johnson Central HS	III	Martina Lutz	III
Johnson Co. MS	B	Martina Lutz	III
Letcher Central HS Concert	III	Jason Griffith	I
Letcher Central HS WE	V	Jason Griffith	I
Letcher MS	B	Tracee Scheeler	II
Martin Co. MS	A	David Jump	II
Martin Co. MS	C	David Jump	I
Mullins MS	C	Jason Jounson	I
Perry Co. Central HS	III	Jacob Sturgeon	II
Pike Co Central HS	IV	Matt Moon	I
Pikeville HS	III	Scott Bersaglia	I
Pikeville Junior HS	C	Scott Bersaglia	I
Shelby Valley HS	IV	Mark Hopkins	I
Sheldon Clark HS	III	Bruce Harkins	II
South Floyd HS	II	Elliot Hawks	I
Valley Middle MS	B	Mark Hopkins	II

District 10 High School - Steven Sudduth, Manager

School	Class	Director	Rating
Adair Co. HS Concert	IV	Tom Case	I
Corbin HS Concert	III	James Cornn	I
Corbin HS Symphonic	V	James Cornn	I
Cumberland Co. HS	III	Jordan Fillingham	I
Harlan HS	III	Betsy Burkhart	II
John Hardin HS Concert	IV	Ellis/Roark	I
Lincoln Co. HS	III	Dale Mayberry	II
Middlesboro HS	III	Suzanne Lee	II
North Laurel HS Symphonic	III	Priscilla Wilkerson	I
Pineville HS	II	Sheldon House	I
Pulaski Co. HS Concert	III	Scott Sexton	I
Rockcastle Co. HS Concert	III	Daugherty/Terry	II
Russell Co. HS	V	Curtis Ervin	I
Somerset HS	II	Megan Lenox	II
South Laurel HS	IV	Mark Sizemore	I
Southwestern HS Symphonic	III	Dan Carpenter	I
Southwestern HS Wind Ens.	IV	Dan Carpenter	II
Taylor Co. HS	III	Stephen Bishop	I
Wayne Co. HS	III	Andy Critz	I
Williamsburg HS	III	Zach Shannon	I

District 10 Middle School - Steven Sudduth, Manager

School	Class	Director	Rating
Meece MS Concert 7th/8th	C	Megan Lenox	III
North Laurel MS Beginning	A	Bret McIntosh	I
North Laurel MS Concert	C	Bret McIntosh	I
North Laurel MS Symphonic	C	Bret McIntosh	I
Northern MS 7th/8th	B	Scott Sexton	I
Russell Co. MS 6th Beginning	A	Curtis Ervin	II

District 11 - Christine Carucci, Manager

School	Class	Director	Rating
B. Michael Caudill MS 6th	A	Walker/Harmon	I
B. Michael Caudill MS 7th	B	Walker/Harmon	I
B. Michael Caudill MS 8th	C	Walker/Harmon	I
Boyle Co. HS	V	Tim Blevins	I
Boyle Co. MS 7th/8th	C	Lucas Sledge	I
Casey Co. HS	III	Jordan Williams	I
Danville HS	IV	Jeff Towns	II
East Jessamine MS 8th	C	Nick Wallace	II
Elkhorn MS 8th	C	Collins/Toppass	I
Estill Co. HS	III	Jason Bowles	I
Farristown MS 6th	A	Tyler Myers	II
Farristown MS 7th/8th	C	Tyler Myers	II
Foley MS 6th	A	Kristen Harrod	I
Foley MS 7th/8th	C	Kristen Harrod	I
Franklin Co. HS	IV	Josh Toppass	I
Garrard Co. HS	II	Chris Vance	I
Garrard Co. MS 7th	B	Noel Green	I
Garrard Co. MS 8th	C	Noel Green	I
Harrison Co. HS	III	John Merz	I
Harrison Co. HS	IV	John Merz	I
Harrison Co. HS	II	James Adams	I
King MS 7th/8th	C	Erica Ashford	I
Lee Co. HS	II	Michelle Estes	II
Madison Central HS	IV	Jeremiah Fowler	I
Madison Central HS	IV	David Jaggie	I
Madison Central HS	VI	David Jaggie	I
Madison MS 6th	A	Kerry Evans	I
Madison MS 7th	B	Kerry Evans	I
Madison MS 8th	C	Kerry Evans	I
Madison Southern HS	III	David Ratliff	I
McCreary Central HS	III	Michelle Simpson	I
Mercer Co. HS	IV	Erica Ashford	I
Model Lab School HS	III	Eric Sokolowski	I
Model Lab School MS 7th/8th	C	Eric Sokolowski	II
Paul L. Dunbar HS	V	Brian Morgan	I
Powell Co. HS	III	Michael Estep	II
Powell Co. MS 6th	A	Mark Gevedon	II
Powell Co. MS 7th	B	Mark Gevedon	II
Powell Co. MS 8th	C	Mark Gevedon	II
Walton-Verona HS	IV	Chris Miller	I
Western Hills HS	IV	Stephanie Wallace	I
Western Hills HS	V	Stephanie Wallace	I

District 12 - Sarah McClave, Manager

School	Class	Director	Rating
Acad. Shawnee HS Concert	II	David Kahl	CO
Acad. Shawnee MS 7th/8th	C	David Kahl	IV
Atherton HS Concert	III	Matt Byrum	I
Atherton HS Symphonic	VI	Matt Byrum	I
Ballard HS Symphonic	III	Carl Kling	I
Ballard HS Wind Ensemble	V	Carl Kling	I
Barrett MS 7th	B	Derek Peters	II

Performance Assessment Results, continued

Barrett MS 8th	C	Derek Peters	I	Henderson Co. HS	V	Adam Thomas	I
Brown HS Concert	II	Curtis Moss	III	Iroquois HS	III	Linda Pulley	I
Brown MS 6th/7th	B	Curtis Moss	I	Letcher Co. Cent. HS Concert	III	Griffith/Scheeler	II
Butler HS Concert	II	Monroe/Gordon	II	Letcher Co. Cent. HS WE	V	Griffith/Scheeler	I
Butler HS Symphonic	IV	Monroe/Gordon	I	Logan Co. HS	IV	David Dayton	II
Carrithers MS 7th/8th	C	Adam Bullock	I	Louisville Male HS	V	Scott Cooksey	I
Central HS Concert	II	Thomas Cheatham	II	Madison Southern HS	III	David Ratliff	II
Central HS Wind Ensemble	III	Thomas Cheatham	II	McCracken Co. HS	V	John Lovell	I
Conway MS 7th/8th	C	Lauren Maxey	II	Model Lab HS	III	Eric Sokolowski	I
Crosby MS 7th	B	Joseph Stivers	I	Montgomery Co. HS	IV	Calvin Schmiege	II
Crosby MS 8th	C	Joseph Stivers	I	North Oldham HS	V	Amanda Buchholz	II
Doss HS Concert	III	Sam Rouster	I	Oldham Co. HS Sym. I	VI	Brad Rogers	I
Eastern HS Concert	IV	Mike Arthur	I	Oldham Co. HS Sym. II	IV	Brad Rogers	I
Eastern HS Symphonic	VI	Mike Arthur	I	Pikeville HS	III	Scott Bersaglia	I
Fairdale HS Symphonic	III	Michael Burkhead	I	Randall K. Cooper HS	V	Brad Stewart	I
Farnsley MS 7th/8th	B	Katherine Hunt	I	Southern HS	III	Todd Simpson	I
Fern Creek HS Symphonic	III	Sean Piatt	I	Southwestern HS	III	Dan Carpenter	II
Highland MS 6th	A	Amy Noon	I	Thomas Nelson HS	IV	Shawn Robinson	II
Highland MS 7th	B	Amy Noon	II	Union Co. HS	III	Payton/Hettenhausen	I
Highland MS 8th	B	Amy Noon	II	Western Hills HS	V	Stephanie Wallace	I
Iroquois HS Concert	III	Linda Pulley	I				
Jefferson Co. Trad. MS 7th	B	T. Gipson/T. Gibson	I				
Jefferson Co. Trad. MS 8th	C	T. Gipson/T. Gibson	I				
Jeffersontown HS Symphonic	III	Charles Stewart	I				
Johnson MS 7th/8th	C	Andre Wilson	I				
Kammerer MS 7th/8th	C	Amanda Cornish	I				
Lassiter MS 7th/8th	B	Eric Johnson	II				
Male HS Concert	IV	Cooksey/Moore	I				
Male HS Symphonic	V	Cooksey/Moore	I				
Meyzeek MS 6th/7th	B	James Daniel	I				
Meyzeek MS 8th	C	James Daniel	I				
Newburg MS 7th/8th	C	Leigh Ann Perdue	II				
Noe MS 6th	A	Beth Lyles	I				
Noe MS 7th/8th	C	Beth Lyles	I				
Olmsted Acad. N. MS 7th/8th	C	Cat Strobel	II				
Olmsted Acad. S. MS 8th	C	Brad Byrum	II				
Pleasure Ridge Park HS Sym.	IV	Debra Burnell-Wise	III				
Ramsey MS 7th/8th	C	David Welch	I				
Seneca HS Concert	III	Daniel Wise	III				
Southern HS Concert	III	Todd Simpson	I				
Stuart MS 7th	B	Michelle Gilfert	III				
Stuart MS 8th	B	Michelle Gilfert	III				
Thomas Jefferson MS 8th	C	Ashley Forrest	II				
Valley HS Concert	III	Greg Heimann	II				
Waggener HS Concert	III	Anastasi Fafalios	II				
Walden MS 6th/8th	C	Katie Hancock	II				
Western HS Concert	II	Ben Taylor	III				
Western MS 7th/8th	C	Eric Allen	I				
Westport MS 6th	B	Jay Matheney	II				
Westport MS 7th/8th	B	Jay Matheney	III				
YPAS Symphonic	VI	Essig/Gregory	I				
YPAS Wind Ensemble	VI	Essig/Gregory	I				

ORCHESTRA

District 1 - James Gregory, Manager

School	Class	Director	Rating
McCracken Co. HS String	III	Melissa Bogle	I
Paducah MS String	M	Lindsey Williams	I
Paducah Tilghman HS String	IV	Doug Van Fleet	I

District 2 - Tom Stites, Manager

School	Class	Director	Rating
Apollo HS	IV	Kelsey Davidson	I
Barren Co. MS 7th/8th	M	Casey Powell	II
Burns MS 6th	E	Kelsey Davidson	I
Burns MS 7th/8th	M	Kelsey Davidson	I
College View MS 7th/8th	M	Greg Olson	I
Daviess Co. HS	IV	Karen Higdon	I
Daviess Co. MS 7th/8th	M	Karen Higdon	I
Owensboro HS	IV	Elizabeth Jones	I
Owensboro HS Chamber	VI	Elizabeth Jones	I
Owensboro MS North 7th/8th	M	Wade Wiggins	I
Owensboro MS South 6th	M	Elizabeth Jones	I

District 3 - David Graham, Manager

School	Class	Director	Rating
Bowling Green HS	V	Patrick ORourke	I
Bowling Green Jr. HS 6th	E	Patrick ORourke	I
Bowling Green Jr. HS 7th	M	Patrick ORourke	I
Bowling Green Jr. HS 8th	M	Patrick ORourke	I
Drakes Creek MS	M	Jessica Mays Stuppy	I
Greenwood HS	III	Jessica Mays Stuppy	II
Henry Moss MS 2nd Period	E	Marie Knueven	I
South Warren HS Spartan Str.	M	Rebecca Baumbach	CO
South Warren MS Spartan Str.	M	Rebecca Baumbach	I
Warren Central HS	CO	Marie Knueven	CO
Warren East MS	E	William Compton	III

District 4 - Brian Ellis, Manager

School	Class	Director	Rating
Bardstown HS String	IV	Paola Manrique-Land	I
Bardstown MS 6th/7th String	C	Paola Manrique-Land	I
Bardstown MS 8th	C	Paola Manrique-Land	I

State Concert Band Assessment - Fred Speck, Manager

School	Class	Director	Rating
Atherton HS	VI	Matt Byrum	I
Bath Co. HS	IV	Rob Rawlings	II
Bullitt East HS	V	Trevor Ervin	I
Butler Co. HS	III	Jason Ausbrooks	II
Campbellsville HS	III	Zach Shelton	II
Doss HS	III	Sam Rouster	II
East Carter HS	III	Logan Skidmore	II

Performance Assessment Results, continued

Grayson Co. Chamber	V	A. French/S. French	I	Lexington Trad. MS 6th	E	Josh Rayburn	I
Grayson Co. HS String	IV	A. French/S. French	I	Lexington Trad. MS 7th/8th	M	Josh Rayburn	I
Grayson Co. MS 6th	B	A. French/S. French	I	Morton MS 6th	E	Paula Williams	I
Grayson Co. MS 7th	C	A. French/S. French	I	Morton MS 7th/8th	M	Paula Williams	I
Grayson Co. MS 8th	D	A. French/S. French	I	Robert Campbell MS 7th/8th	M	Nicola Rohr	I

District 5 – Tony Wise, Manager

School	Class	Director	Rating	School	Class	Director	Rating
Martha L. Collins HS	III	Mary McGillen	I	Southern MS 6th	E	Heidi Morris	I
Shelby Co. HS	III	Tammy Oerther	I	Southern MS 7th/8th	M	Heidi Morris	I
Shelby West MS 6th/7th	M	Mary McGillen	II	Tates Creek MS 6th	E	Frank Spragens	I
				Tates Creek MS 7th/8th	M	Frank Spragens	I
				Winburn MS 6th	E	Markley/Stanton	I
				Woodford Co. MS 7th	M	Greg Marsee	I
				Woodford Co. MS 8th	M	Greg Marsee	I

District 6 – Tom Mueller, Manager

School	Class	Director	Rating
Highlands HS Chamber	V	Kathy Anderson	I

District 8 – John Johnson, Managers

School	Class	Director	Rating
Ashland MS Beginning	E	Dan Boyer	I
Ashland MS Intermediate	M	Dan Boyer	I
McNabb MS Group I	M	Lauren Wright	I
McNabb MS Group II	M	Lauren Wright	I
Montgomery Co. HS	IV	Aaron Breeck	I
Montgomery Co. MS Inter.	E	Aaron Breeck	I
Paul G. Blazer HS Inter.	III	Dan Boyer	I
Paul G. Blazer HS	V	Dan Boyer	I
Russell HS	IV	Drew Stowers	I
Russell MS 6th	E	Drew Stowers	I
Russell MS 7th	M	Drew Stowers	I
Russell MS 8th	M	Drew Stowers	II

District 7 High School – Kelly Mayes & Josh Rayburn, Managers

School	Class	Director	Rating
Bryan Station HS Chamber	VI	Price/Mayes	I
Bryan Station HS Concert	III	Price/Mayes	I
Bryan Station HS Guitar Ens.	IV	Don Hicks	I
Bryan Station HS Symphony	IV	Price/Mayes	I
George Rogers Clark HS	III	Nicola Rohr	I
Henry Clay HS Chamber	VI	Julie Foster	I
Henry Clay HS Repertory	IV	Mary Henton	I
Henry Clay HS Symphonic	V	Julie Foster	I
Lafayette HS Chamber	VI	Phil Kent	I
Lafayette HS Concert	IV	Laura Fallon	I
Lafayette HS Full Symphony	VI	Phil Kent	I
Lafayette HS String	III	Laura Fallon	II
Lafayette HS Symphonic	V	Phil Kent	I
Paul Dunbar HS Combined	IV	Rebecca Goff	I
Paul Dunbar HS Concert	V	Rebecca Goff	I
Paul Dunbar HS Symphonic	VI	Rebecca Goff	I
Tates Creek HS Combined	IV	McWhorter/Norris	I
Tates Creek HS Symphony	V	McWhorter/Norris	I
Woodford Co. HS Chamber	V	Greg Marsee	I
Woodford Co. HS Concert	III	Greg Marsee	II

District 12 – Cheryl Schaefer, Manager

School	Class	Director	Rating
Atherton Advanced Chamber	IV	Nelson Dougherty	I
Atherton Honors	III	Nelson Dougherty	II
Ballard HS Chamber	VI	Eva Rouse	I
Ballard HS Concert	IV	Eva Rouse	I
Ballard HS Sinfonia	III	Eva Rouse	I
Barret Trad. MS 7th	M	Alexandra Howard	I
Barret Trad. MS 8th	M	Alexandra Howard	I
Brown HS	IV	Tamika Carr	I
Brown MS	M	Tamika Carr	I
Butler Trad. HS Advanced	IV	David Ruth	I
Carrithers MS 7th/8th	M	Caia Cross	I
Central HS	III	Laura Leach	II
Christian Acad. Lou. Chamber	V	April MacDonald	I
Christian Acad. Lou. Concert	IV	April MacDonald	I
Christian Acad. Lou. Sym.	VI	April MacDonald	I
Christian Acad. Lou. MS 6th	E	Courtney Morrison	I
Christian Acad. Lou. MS 7th	M	Courtney Morrison	I
Conner HS	IV	Chris Peterson	I
Conner MS Advanced	M	Michelle Carroll	I
Conway MS 6th/8th	M	Grace Kim	I
Crosby MS 7th/8th	M	Marsha Webb	I
Doss HS	III	Christina Givan	I
dupont Manual HS Concert	VI	Dan Whisler	I
Eastern HS Chamber	VI	Fred Speck	I
Eastern HS Concert	III	Fred Speck	I
Eastern HS Strings	IV	Fred Speck	I
Fairdale HS	III	Derrick Turner	I
Fairdale HS Intermediate	III	Derrick Turner	II
Farnsley MS String	M	Catherine Cunanan	II
Fern Creek HS Chamber	IV	Aaron May	I
Fern Creek HS String	III	Aaron May	II

District 7 Middle School – Kelly Mayes & Josh Rayburn, Managers

School	Class	Director	Rating
Winburn MS 7th/8th	M	Markley/Stanton	I
Baker Intermediate MS 6th	E	Nicola Rohr	I
Beaumont MS 6th	E	Higgins/White	I
Beaumont MS 7th	M	Cindy Higgins	I
Beaumont MS 8th	M	Cindy Higgins	II
Bryan Station MS 6th	E	Sarah Payne	I
Bryan Station MS 7th	M	Sarah Payne	I
Bryan Station MS 8th	D	Sarah Payne	I
Crawford MS 6th	E	Annette DiToma	I
Crawford MS 7th/8th	M	Annette DiToma	I
Edythe J. Hayes MS 6th	E	Francis/Summers	I
Edythe J. Hayes MS 7th	M	Francis/Summers	I
Edythe J. Hayes MS 8th	M	Francis/Summers	I
Jessie Clark MS Eagle 8th	D	Michelle Hudson	I
Jessie Clark MS Gold 7th	M	Michelle Hudson	I
Jessie Clark MS Maroon 6th	E	Michelle Hudson	I
Leestown MS 6th	E	Nathan Wilson	I
Leestown MS 7th	M	Nathan Wilson	I
Leestown MS 8th	M	Nathan Wilson	I

Performance Assessment Results, continued

Highland MS 7th/8th	M	Wendy Doyle	I	Reidland MS	M	Chris Thornton	I
Highland MS Full	M	Wendy Doyle	I				
Iroquois HS	III	Samantha Sankey	II	District 2 – Jenifer Wiggins & Alecia Meyer, Managers			
Jefferson Co. Trad. MS	M	Marsha Curtis-Jones	I	School	Class	Director	Rating
Jeffersontown HS Advanced	V	Caia Cross	I	Apollo HS Singers	E	Shelby Wooldridge	I
Johnson MS Advanced	M	David Ruth	I	Apollo HS Women	E	Shelby Wooldridge	III
Kammerer MS	M	Cindy Dougherty	I	Burns MS	M	Clarissa Smith	III
Knight MS	M	Thomas Grisanti	II	College View MS 6th	E	Rebecca Partlow	II
Lassiter MS 7th/8th	M	Julianne Gunn	I	College View MS 8th	M	Rebecca Partlow	II
Male HS	III	Wilma Benson	I	Daviess Co. HS Chamber	M	Candy Miller	I
Male HS Chamber	V	Wilma Benson	I	Daviess Co. HS Concert	D	Candy Miller	I
Meyzeek MS 7th	M	Suzie Kinman	I	Daviess Co. HS Women	M	Candy Miller	I
Meyzeek MS 8th	M	Susie Kinman	I	Daviess Co. MS	E	Pamela Wooldridge	I
Newburg MS 7th/8th Adv.	M	Lisa Fossett	I	Henderson Co. HS Chamber	D	Andrew Miller	I
Noe MS	E	Nelson Dougherty	II	Henderson Co. HS Concert	M	Andrew Miller	I
Noe MS 7th/8th	M	Nelson Dougherty	I	Henderson North MS	E	Jacob Bradley	II
Olmsted Acad. North MS 7th	E	Mark Brogdon	I	Henderson South MS	E	Randall Wilkerson	II
Olmsted Acad. South MS 7th	M	Courtney Schisler	I	James Madison MS 7th	E	Deborah Iverson	I
Olmsted Acad. South MS 8th	M	Courtney Schisler	II	James Madison MS 8th	M	Deborah Iverson	I
Pleasure Ridge Park HS	III	Julia Green	I	Owensboro HS Brava	M	Jenifer Wiggins	I
Pleasure Ridge Park HS	IV	Julia Green	II	Owensboro HS Chorale	M	Jenifer Wiggins	I
Ramsey MS Festival Strings	M	Anita Dane	I	Owensboro HS Singers	E	Jenifer Wiggins	I
Robert Frost MS 6th	E	Ty Carver	II	Owensboro MS Bella Voce	E	Alecia Meyer	I
Seneca HS	III	John Marietta	II	Union Co. HS	E	Joel Hettenhausen	II
Seneca HS Advanced	IV	John Marietta	I				
Southern HS	III	Thomas Grisanti	I	District 3 - Jennifer Adam, Manager			
Stuart Academy MS	M	Nicholas Weiner	II	School	Class	Director	Rating
Thomas Jefferson MS	E	Ashley Forest	I	Allen Co.-Scottsville HS	E	Megan Puckett	II
Valley HS	III	Dave Nelson	I	Barren Co. HS Trojan	D	Byron Lucas	II
Valley HS Freshman	III	Dave Nelson	I	Barren Co. MS Trojan	D	Byron Lucas	I
Waggener HS	III	Alice Markiewicz	I	Bowling Green HS A Cappella	D	Trish Beresford	I
Western MS for the Arts 6th	E	Robert Dixon	I	Bowling Green HS Bellissima	M	Trish Beresford	I
Western MS for the Arts 7th	M	Robert Dixon	I	Butler Co. HS Advanced	M	Travis Lowe	II
Westport MS 7th	M	Cory Zilisch	I	Butler Co. HS Chamber	M	Travis Lowe	II
Westport MS 8th	M	Cory Zilisch	I	Butler Co. MS 7th	E	Travis Lowe	II
YPAS Philharmonia	VI	Daniel Whisler	I	Butler Co. MS 8th	E	Travis Lowe	II
				Christian Co. HS Advanced	M	Benjamin Stephens	II
				Christian Co. HS Intermediate	E	Benjamin Stephens	II
				Christian Co. MS 7th	M	Benjamin Stephens	II
				Christian Co. MS 8th	M	Benjamin Stephens	II
				Drakes Creek MS 7th/8th Mix	M	Rebecca Fields	II
				Drakes Creek MS 8th Adv.	M	Rebecca Fields	I
				Franklin-Simpson HS Adv.	D	Emily Petty	I
				Franklin-Simpson HS Combined	M	Emily Petty	II
				Franklin-Simpson HS Men's	E	Emily Petty	I
				Franklin-Simpson HS Women's	E	Emily Petty	I
				Franklin-Simpson MS	E	Elizabeth Cook	II
				Glasgow HS	E	Eric Doades	II
				Greenwood HS Adv. Mixed	M	Ellie Osborne	I
				Greenwood HS Adv. Women	M	Ellie Osborne	I
				Henry Moss MS 7th	E	Denise Oliver	II
				Henry Moss MS 8th	E	Denise Oliver	II
				Hopkinsville HS Adv. Women	M	Myra Sutton	II
				Hopkinsville HS Chamber Ens.	M	Myra Sutton	II
				Hopkinsville MS 7th/8th	M	Travis Miller	II
				James E. Bazzell MS	M	Megan Puckett	II
				Logan Co. HS	E	David Dayton	I
				South Warren HS Advanced	D	Debbie Belcher	I
				South Warren HS Beg. Mixed	E	Debbie Belcher	I
				South Warren MS Mixed	D	Grant Calvert	I
				South Warren MS Treble	M	Grant Calvert	I
				Warren Central HS Advanced	M	Chandel Shanklin	I

VOCAL

District 1 - Brant Veal, Manager

School	Class	Director	Rating
Ballard Co. MS 6th	E	Brant Veal	I
Ballard Co. MS 7th/8th	M	Brant Veal	I
Ballard Mem. HS Concert	M	Brant Veal	I
Ballard Mem. HS Women's	M	Brant Veal	I
Calloway Co. HS Concert	E	Mark Dycus	II
Christian Fellowship HS	E	Sandy Hummel	I
Christian Fellowship MS	E	Sandy Hummel	II
Graves Co. HS Chamber	D	Makenzie Kauffman	I
Graves Co. MS	E	Laynie Mitchell	II
Heath MS 6th	E	Steven Page	I
Heath MS 7th/8th	M	Steven Page	I
Lone Oak MS 6th	E	Dawn Evans	I
Lone Oak MS 7th/8th	D	Dawn Evans	I
Lone Oak MS 8th	D	Dawn Evans	I
McCracken Co. HS Crimson	M	Carlyn Zimmermann	I
McCracken Co. HS Varsity	D	Carlyn Zimmermann	I
Paducah MS 6th	E	Samantha Veal	I
Paducah MS 7th/8th	M	Samantha Veal	I
Pad. Tilghman HS Chamber	M	Matt Hinz	I
Pad. Tilghman HS Choralaires	E	Matt Hinz	I
Pad. Tilghman HS Concert	M	Matt Hinz	I

Performance Assessment Results, continued

Warren Central HS Mixed	M	Chandel Shanklin	I	Shelby Co. HS Shelby Singers	M	Courtney Sturgill	I
Warren East HS Advanced	M	Cheri Marshall	II	Shelby Co. HS Women's	M	Courtney Sturgill	II
Warren East MS	E	Katie Morrison	CO	Shelby East MS	M	Talor Barnett	II
District 4 - Brandon Centers & Natasha Allen, Managers				South Oldham HS Chamber	D	Justin Romney	I
School		Class Director	Rating	South Oldham HS Com. SSAA	M	Justin Romney	I
Bardstown HS Chorus I	E	Catherine Christian	III	South Oldham HS TTB	E	Justin Romney	I
Bardstown HS Tiger Chorale	D	Catherine Christian	II	South Oldham MS 6th	E	Kelsey Edelen	I
Bloomfield MS 6th-8th	E	Darrell Parks	I	South Oldham MS 7th	M	Kelsey Edelen	I
Breckenridge Co. HS Mixed	M	Kathy Tabor	I	South Oldham MS 8th	M	Kelsey Edelen	I
Central Hardin HS Mixed	D	Brandon Centers	CO	Spencer Co. HS Chamber Singers	M	Kelsi Edelen	I
Central Hardin HS Chamber	D	Brandon Centers	CO	Spencer Co. HS Mixed	E	Kelsi Edelen	I
David T. Wilson Elem. 6th	E	Ruth Ann Shacklett	II	Spencer Co. HS Women's	M	Kelsi Edelen	I
Grayson Co. HS Concert	M	Teresa Jarboe	II	Spencer Co. MS 6th	E	Kelsi Edelen	I
Grayson Co. MS 6th	E	Teresa Jarboe	I	Spencer Co. MS 7th	M	Kelsi Edelen	I
Grayson Co. MS 7th	E	Teresa Jarboe	I	Spencer Co. MS 8th	M	Kelsi Edelen	II
Grayson Co. MS 8th	E	Teresa Jarboe	II	T. T. Knight MS	E	Natasha Allen	II
Meade Co. HS Concert	M	Crafton/Rebilas	II	Western Hills HS Adv. Chorale	D	Meredith Goins	I
Meade Co. HS Madrigals	M	Derek Crafton	I	Western Hills HS Men's	E	Meredith Goins	I
Meade Co. HS Mixed	E	Crafton/Rebilas	I	Western Hills HS Women's	M	Meredith Goins	I
Nelson Co. HS Mixed	E	Stephanie Robinson	III	District 6 High School - Josh & Amy Huff, Manager			
Nelson Co. HS Mixed	M	Stephanie Robinson	IV	School		Class Director	Rating
Stuart Pepper MS Cambiata	E	Crafton/Rebilas	I	Beechwood HS Singing Tigers	E	Taylor Ross	CO
Stuart Pepper MS Treble I	E	Crafton/Rebilas	I	Boone Co. HS Chamber	D	Lauren Barnhill	I
Stuart Pepper MS Treble II	E	Crafton/Rebilas	I	Boone Co. HS Concert	E	Lauren Barnhill	II
Taylor Co. HS Mixed	M	Jericho McCoy	III	Boone Co. HS Women's	M	Lauren Barnhill	I
West Hardin MS Mixed	M	Anna Benningfield	II	Bracken Co. HS	E	Steven Funke	CO
District 5 - Tony Wise, Manager				Campbell Co. HS Chorale	D	Joshua Huff	I
School		Class Director	Rating	Campbell Co. HS Women's	M	Joshua Huff	I
Anderson Co. HS Advanced	D	Sue Lou Smith	I	Conner HS Chamber	D	John Deferraro	I
Anderson Co. MS	M	Cara Guth	I	Conner HS Festival	M	John Deferraro	I
Bullitt Central HS Concert	E	Melanie Sparks	II	Conner HS Mixed	E	John Deferraro	I
Bullitt East HS Concert	E	Carrie Gary	CO	Conner HS Women's	M	John Deferraro	I
Bullitt East HS Advanced	M	Carrie Gary	I	Cooper HS Chamber Women's	D	Kellie Clark	I
East Oldham MS 6th	E	Kathy Iqbal	I	Cooper HS Mixed Chamber	D	Kellie Clark	I
East Oldham MS 7th	M	Kathy Iqbal	I	Cooper HS Woman's	D	Kellie Clark	I
East Oldham MS 8th	D	Kathy Iqbal	I	Dixie Heights HS Chamber	M	Katie Hayward	I
Hebron MS 6th	E	Julia McKay	CO	Dixie Heights HS Treble	D	Katie Hayward	I
Hebron MS Advanced Ladies	M	Julia McKay	I	Highlands HS Bel Canto	D	Jacob Young	II
Hebron MS Concert	M	Julia McKay	I	Highlands HS Chamber	D	Jacob Young	II
Henry Co. HS Wildcat Chorale	M	Russell Cooper	I	Highlands HS Chorale	E	Jacob Young	II
Henry Co. HS Wildcat Singers	M	Russell Cooper	II	Highlands HS Concert	E	Matthew Taylor	II
Henry Co. MS 6th	E	Russell Cooper	I	Lloyd Memorial HS Concert	E	Chuck Harris	III
Henry Co. MS 7th	M	Russell Cooper	II	Owen Co. HS Concert	E	Chuck Harris	III
Henry Co. MS 8th	D	Russell Cooper	II	Ryle HS A Capella Chamber	M	Josh Hein	I
North Oldham HS Mixed	M	Zachary Doyle	I	Ryle HS Concert	E	Josh Hein	CO
North Oldham HS Women's	E	Zachary Doyle	I	Simon Kenton HS Concert	E	Melissa Martin	CO
North Oldham MS 6th	E	Jeremy Roberts	I	Williamstown HS Chamber	E	Tonya Fox	II
North Oldham MS 7th	E	Jeremy Roberts	II	District 6 Middle School - Josh & Amy Huff, Manager			
North Oldham MS 8th	M	Jeremy Roberts	CO	School		Class Director	Rating
North Oldham MS 8th SAB	M	Jeremy Roberts	CO	Bracken Co. MS	E	Steven Funke	II
Oldham Co. HS Bella Voce	D	Haley Reed	I	Camp Ernst MS 7th/8th Mixed	E	Andrea Leffler	I
Oldham Co. HS Cantamus	M	Haley Reed	I	Conner MS 6th	E	Becky Bertelsen	I
Oldham Co. HS Chorale	M	Haley Reed	I	Conner MS 7th/8th	E	Becky Bertelsen	I
Oldham Co. HS Fellas	E	Haley Reed	CO	Grant Co. MS 7th/8th	E	Jessica Proffitt	I
Oldham Co. HS Haley's Comets	D	Haley Reed	I	Phillip Gray MS 8th	E	Diana Kozar	I
Oldham Co. MS 6th	E	Lauren Ganote	I	Reiley Elementary	E	Lederrick Wesley	II
Oldham Co. MS 7th	M	Lauren Ganote	I	Summitview MS 6th	M	Samantha Stapleton	II
Oldham Co. MS 8th	D	Lauren Ganote	I	Summitview MS 8th	M	Samantha Stapleton	II
Shelby Co. HS 8th	M	Courtney Sturgill	II	Turkeyfoot MS 8th	E	Alison Peeno	I
Shelby Co. HS Concert	E	Courtney Sturgill	I	Turkeyfoot MS Treble	E	Alison Peeno	I
				Twenhofel MS 7th	E	Sherry Clark	I

Performance Assessment Results, continued

Twenhofel MS 8th	E	Sherry Clark	I	Royal Spring MS 7th	E	Glenna Metcalfe	I
Williamstown MS Mixed	E	Tonya Fox	II	Royal Spring MS 8th	E	Glenna Metcalfe	I
Williamstown MS 6th	E	Tonya Fox	II	SCAPA Elementary Treble	E	Amanda Wells	I
Woodland MS Mixed	E	Lauren Bridges	I	SCAPA MS 4th	E	Amanda Wells	I
Woodland MS Women's	E	Lauren Bridges	I	SCAPA MS 5th	E	Amanda Wells	I
District 7 High School - Daniel Wesley, Manager				SCAPA MS Mixed	D	Amanda Wells	I
School	Class	Director	Rating	Scott Co. MS 7th/8th	E	Sam Coleman	I
East Jessamine HS Chorale	E	Demetrius Walker	I	Seton Catholic MS Singers	M	Amy Black	I
East Jessamine HS Women's	E	Demetrius Walker	I	Seton Catholic MS Tones	M	Amy Black	I
Franklin Co. HS Beg. Women's	E	Raye Hurley	II	Southern MS Mixed	E	Stephanie Grinnell	I
Franklin Co. HS Choristers	D	Raye Hurley	I	Tates Creek MS Combined	E	Regan Love	I
Henry Clay HS Adv. Singers	M	Isaac Jones	II	West Jessamine MS 7th	M	Rachel Deshler	I
Henry Clay HS Women's	M	Isaac Jones	III	West Jessamine MS 8th	D	Rachel Deshler	I
Lafayette HS Adv. Women's	D	Laura Howard	I	Winburn MS	E	Thomas Steuart	II
Lafayette HS Chorale	D	Ryan Marsh	I	Woodford Co. MS 6th	E	Alyssa Sturgill	I
Lafayette HS Madrigal Singers	D	Ryan Marsh	I	Woodford Co. MS 7th	E	Alyssa Sturgill	I
Lafayette HS Singers	M	Ryan Marsh	I	Woodford Co. MS 8th	E	Alyssa Sturgill	I
Lex. Catholic HS Chamber	D	Robert Vanover	I	District 8 - Ashley Tyree, Manager			
Lex. Christian Acad. Chamber	D	Daniel Wesley	I	School	Class	Director	Rating
Lex. Christian Acad. Chorale	D	Daniel Wesley	II	Ashland MS 6th	E	Karen Hopkins	II
Lex. Christian Acad. Women's	M	Daniel Wesley	I	Ashland MS 7th/8th	E	Karen Hopkins	II
Paul Dunbar HS Concert	D	Tiffany Marsh	I	Bourbon Co. HS	E	Eric Hale	I
Tates Creek HS Adv. Women's	M	Nicholas Johnson	I	Boyd Co. HS	M	Aaron Bowling	I
Tates Creek HS Chamber	D	Nicholas Johnson	I	Fleming Co. HS	E	Shelia Lamb	I
West Jessamine HS Concert	D	Brett Burton	II	George Rogers Clark HS	E	Kris Olson	I
West Jessamine HS Festival	E	Brett Burton	I	Lawrence Co. HS	E	Douglas Farrell	CO
West Jessamine HS WE	M	Brett Burton	I	McNabb MS 7th/8th	D	Nick Breiner	II
Woodford Co. HS Chorale	M	Cooper Schrimsher	CO	Montgomery Co. HS	M	Ashley Tyree	I
District 7 Middle School - Alyssa Sturgill, Manager				Paul G. Blazer HS	M	Karen Hopkins	I
School	Class	Director	Rating	Rowan Co. HS	E	Josh Hamilton	I
Baker Intermediate Elementary	NA	Stephanie Puckett	I	Rowan Co. MS 6th	E	Josh Hamilton	I
Beaumont MS 7th/8th	E	Lois Birdwell	I	Rowan Co. MS 7th/8th	E	Josh Hamilton	I
Beaumont MS Colt Chorale	E	Lois Birdwell	I	Russell Ind. HS	M	Theresa Russell	I
Bondurant MS 6th	E	Stephen Mann	I	Scott Co. HS	D	Merrit/Wright/Kincaid	I
Bondurant MS 7th	M	Stephen Mann	II	Simons MS	E	Shelia Lamb	I
Bondurant MS 8th	M	Stephen Mann	I	District 9 - Mallory Williamson, Manager			
Bourbon Co. MS 6th	M	Sue Ellen Ballard	I	School	Class	Director	Rating
Bourbon Co. MS 7th/8th	M	Sue Ellen Ballard	I	Belfry HS	M	Mallory Williamson	I
Bourbon Co. MS Bella	M	Sue Ellen Ballard	I	Belfry MS	E	Kendrick Applegate	II
Cane Ridge Elem. 4th/5th	E	Sarah Rose	I	Martin Co. MS Advanced	E	David Jump	II
Crawford MS 6th	E	Kelsey Jones	II	Martin Co. MS Beginning	E	David Jump	II
Crawford MS 7th/8th	M	Kelsey Jones	II	Pike Central HS	M	Jason Johnson	II
East Jessamine MS 6th	E	William Mason	II	Pikeville Elem.	E	Barbara Kelly	I
East Jessamine MS 7th/8th	E	William Mason	II	Pikeville HS Chamber	E	Barbara Kelly	I
Edythe J. Hayes MS 8th	M	Emily Levey	II	Pikeville HS Mixed	E	Barbara Kelly	I
Edythe J. Hayes MS Beginning	M	Emily Levey	I	Pikeville Jr. HS	E	Barbara Kelly	I
Georgetown MS 8th	M	Christine Holajter	II	Prestonsburg HS	E	Greta Gilbert	II
Jessie Clark MS 6th	E	Candy Flynn	I	Shelby Valley HS Beginning	E	Melanie Brown	II
Jessie Clark MS 7th	E	Candy Flynn	I	Shelby Valley HS Wildcat	E	Melanie Brown	II
Jessie Clark MS 8th	E	Candy Flynn	II	District 10 - Jackie Melton, Manager			
Leestown MS Advanced	E	Lynn Przygoda	I	School	Class	Director	Rating
Leestown MS Beginning	E	Lynn Przygoda	I	Harlan Co. HS 9th-12th	E	Jeanne Ann Lee	I
Lex. Christian Acad. MS 7th	E	Daniel Wesley	I	Northern Pulaski MS 7th/8th	E	June Correll	I
Lex. Christian Acad. MS 8th	M	Daniel Wesley	I	Williamsburg HS 9th-12th	M	Katy Rose	I
Lexington Trad. Magnet Select	E	Richard Burns	I	District 11 - Lisa Jury, Manager			
Morton MS 6th	E	Kaitlin DeSpain	I	School	Class	Director	Rating
Morton MS 7th/8th	E	Kaitlin DeSpain	I	Boyle Co. HS	M	Tim Blevins	I
Morton MS Advanced	E	Kaitlin DeSpain	I	Danville HS Mixed	E	Camille Towns	II
Robert Campbell Jr. HS 7th/8th	E	Kris Olson	I				
Royal Spring MS 6th	E	Glenna Metcalfe	I				

Performance Assessment Results, continued

Garrard Co. MS 7th/8th	M	Joshua Fletcher	I	Lou. Male Trad. HS Men's	E	Alexis Paxton	II
Garrard Co. MS 7th Mixed	M	Joshua Fletcher	II	Lou. Male Trad. HS Mixed	D	Alexis Paxton	I
Madison Cent. HS Madrigal	D	Lisa Jury	I	Lou. Male Trad. HS Women's	M	Alexis Paxton	I
Madison Cent. HS Men's	M	Olivia Erb	II	Newburg MS	E	Jennifer Jeffers	II
Madison Cent. HS Treble	M	Olivia Erb	I	Noe MS 6th Treble	E	Caitlin Jennings	I
Madison Cent. Women's	M	Lisa Jury	I	Noe MS 7th Mixed	M	Caitlin Jennings	I
Madison MS 6th	E	Elizabeth Pike	II	Noe MS 8th Mixed	D	Caitlin Jennings	II
Madison MS 7th/8th	M	Elizabeth Pike	I	Olmsted Acad. N. MS	M	Gordon Crawford	I
Madison Southern HS	M	Letha Hembree	I	Olmsted Acad. S. MS 8th	E	DeAnna Gray	II

District 12 - Terri Foster, Manager

School	Class	Director	Rating	School	Class	Director	Rating
Academy at Shawnee	E	David Kahl	CO	Ramsey MS Mixed	E	Jennifer Druetzler	II
Assumption HS Adv. Women	D	Jackie Metry	I	Seneca HS Bel Canto	E	Mendy Cumberledge	I
Assumption HS Women	E	Jackie Metry	I	Seneca HS Concert	E	Mendy Cumberledge	I
Atherton HS Bel Canto	M	Nan Tate	I	Valley HS Concert	E	Ian Hooper	CO
Atherton HS Chamber Singers	M	Nan Tate	I	Valley HS Men's Ensemble	E	Ian Hooper	CO
Atherton HS Concert	E	Nan Tate	II	Waggener HS Advanced Mixed	M	Aaron Weaver	II
Barret Trad. MS Beginning	E	Susan Cox	I	Western HS Beginning Women's	E	Sarah Tubbesing	CO
Butler Trad. HS Concert	M	Greg Monsma	II	Western HS Warrior	E	Sarah Tubbesing	II
Butler Trad. HS Freshmen	M	Greg Monsma	II	YPAS Men's	D	Jacob Cook	I
Butler Trad. HS Women's	M	Greg Monsma	II	YPAS Women's	D	Jacob Cook	I
Carrithers MS 6th	E	Alisha Bruce	I				
Carrithers MS 7th/8th	M	Alisha Bruce	I				

State Choral Assessment - Melissa Skaggs, Manager

School	Class	Director	Rating	School	Class	Director	Rating
Central HS Concert	E	Ben Williams	III	Assumption HS Adv. Women's	D	Jackie Metry	I
Christian Acad. of Lou. 6th	E	Angela Stephens	I	Campbell Co. HS Chorale	D	Josh Huff	II
Christian Acad. of Lou. 7th/8th	M	Angela Stephens	I	Conner HS Chamber	D	John Deferraro	I
Christian Acad. of Lou. Wmn	D	Cassandra Ungaro	I	Conner HS Festival	M	John Deferraro	I
Christian Acad. of Lou. Chorale	D	Cassandra Ungaro	I	Conner HS Mixed	E	John Deferraro	I
Christian Acad. of Lou. Concert	E	Cassandra Ungaro	I	Conner HS Women's	M	John Deferraro	II
Crosby MS 6th	E	Lydia Cox	II	Cooper HS Advanced Women's	D	Kellie Clark	I
Crosby MS 7th	E	Lydia Cox	II	Cooper HS Chamber	D	Kellie Clark	I
Crosby MS 8th	E	Lydia Cox	I	Cooper HS Women's	D	Kellie Clark	I
Doss HS Advanced Women's	M	Katie Allen	II	East Jessamine HS Chorale	E	Demetrius Walker	I
Doss HS Beginning Women's	E	Katie Allen	II	Franklin-Simpson HS Men's	E	Emily Curtis	II
Doss HS Men's Ensemble	E	Katie Allen	I	Harlan Co. HS Mixed	E	Jeanne Lee	II
Eastern HS Beginning Women	M	Lori Knapke	I	Henderson Co. HS Chamber	M	Andrew Miller	II
Eastern HS Concert	E	Lori Knapke	I	Henry Co. HS Wildcat Chorale	M	Russell Cooper	II
Fairdale HS Concert	E	Danielle Curtsinger	II	Jeffersontown HS Bella Vocé	D	Samantha Lilly	I
Farnsley MS 6th	E	Mark Benz	II	Jeffersontown HS Men's Ens.	E	Samantha Lilly	I
Farnsley MS 7th	M	Mark Benz	II	Jeffersontown HS Treble Ens.	E	Samantha Lilly	I
Farnsley MS 8th	M	Mark Benz	II	Jeffersontown HS Women's	M	Samantha Lilly	II
Fern Creek HS Treble Ensemble	E	Chelsea Bolas	CO	Oldham Co. HS Cantamus	M	Haley Reed	I
Fern Creek HS Varsity Chamber	E	Chelsea Bolas	CO	Oldham Co. HS Chorale	M	Haley Reed	I
Highland MS 6th	E	Linda Marks-Morgan	II	Oldham Co. HS Haley's Comets	D	Haley Reed	I
Highland MS 7th	E	Linda Marks-Morgan	I	Pikeville HS Chamber	E	Barbara Kelley	II
Highland MS 8th	E	Linda Marks-Morgan	I	Pikeville HS Mixed	E	Barbara Kelley	II
J. Graham Brown HS	E	Curtis Moss	II	South Warren HS Advanced	E	Debbie Belcher	I
J. Graham Brown MS	E	Curtis Moss	I	South Warren HS Beg. Mixed	D	Debbie Belcher	I
Jefferson Co. Trad. MS 7th	E	Benjamin Powell	I	Spencer Co. HS Women's	M	Kelsey Edelen	I
Jefferson Co. Trad. MS 8th	M	Benjamin Powell	I	West Jessamine HS Wmn's Ens.	D	Brett Burton	I
Jeffersontown HS Bella Voce	D	Samantha Lilly	I				
Jeffersontown HS Men's Ens.	E	Samantha Lilly	I				
Jeffersontown HS Treble Ens.	E	Samantha Lilly	I				
Jeffersontown HS Women's	M	Samantha Lilly	I				
Johnson Trad. MS 6th	E	Anna Rittenhouse	I				
Johnson Trad. MS 7th	E	Anna Rittenhouse	II				
Johnson Trad. MS 8th	M	Anna Rittenhouse	II				
Kammerer MS 6th Treble	E	Melissa Weaver	I				
Kammerer MS 7th/8th Girls	M	Melissa Weaver	I				
Kammerer MS 7th/8th Mixed	M	Melissa Weaver	I				
Lou. Male Trad. HS Beg. Treble	E	Alexis Paxton	I				

STATE SOLO AND ENSEMBLE

Jason Cumberledge, Manager

VOCAL

School	Name	Event	Rating
John Hardin HS	Jessica Brandt	Solo	I
John Hardin HS	Chanelle Dau Pino	Solo	I
John Hardin HS	Chanelle Dau Pino	Ensemble	I
Johnson Central HS	Abbie Brown	Solo	I

Performance Assessment Results, continued

Lafayette HS	Williams Atkinson	Solo	I	Grayson Co. HS	Darrenger Huff	Euphonium	II
Lafayette HS	Maddie Carbary	Solo	I	Grayson Co. HS	Darrenger Huff	Brass Trio	II
Lafayette HS	Lilith Embury	Solo	I	Grayson Co. HS	Jackson Parker	Trombone	II
Lafayette HS	Malachi Keith	Solo	II	Grayson Co. HS	Jacob Swift	Trombone	II
Lafayette HS	Emma Owens	Solo	II	Grayson Co. HS	Kaylie Westphal	Horn	I
Montgomery Co. HS	Parker Poulos	Solo	I	Grayson Co. HS	Noah Yates	Brass Quartet	I
Montgomery Co. HS	R. Wallingford	Solo	I	Henderson Co. HS	Abigail Calhoun	Trumpet	I
Montgomery Co. HS	Katie Webb	Solo	I	Henderson Co. HS	Josh Clem	Trumpet	II
Pikeville HS	Canaan Godsey	Solo	I	Henderson Co. HS	Josh Clem	Brass Quintet	I
Pikeville HS	Britney Hopkins	Solo	I	Henderson Co. HS	Trace Denton	Trumpet	I
Prestonsburg HS	Ally Davis	Solo	I	Henderson Co. HS	B. Glazenbrook	Euphonium	I
Warren Central HS	Joel Vasquez	Solo	I	Henry Co. HS	Caleb Duff	Trombone	I

FLUTE

School	Name	Event	Rating	School	Name	Event	Rating
Central Hardin HS	Madison Fogle	Flute	II	M. L. Collins HS	Kimmi Hebdon	Horn	I
Central Hardin HS	Mariah Kendell	Flute Choir	I	M. L. Collins HS	Katie Hodge	Horn	II
Glasgow HS	Courtney Hale	Flute	I	McCreary Co. HS	Caleb Chambers	Trumpet	II
Grayson Co. HS	Alexis Coon	Flute	I	Spencer Co. HS	A. Cunningham	Trumpet	CO
Hancock Co. HS	Lara Roberts	Flute	I	Warren Central HS	Elizabeth Castro	Trumpet	I
Henderson Co. HS	Corye Parrish	Flute	I	Warren East HS	Adam Alsup	Brass Quartet	I
Henry Clay HS	Katie Demos	Flute	I	Warren East HS	Elijah Whittle	Horn	CO
Lafayette HS	K. McCullough	Flute	I	Woodford Co. HS	Nicholas Adkins	Tuba	I
Lafayette HS	Anna Sommer	Flute	I				
Logan Co. HS	Lauren Batten	Flute	I				
Logan Co. HS	Rylee Hobbs	Flute	I				
Woodford Co. HS	Hannah Iglehart	Flute	I				

DOUBLE REED

School	Name	Event	Rating	School	Name	Event	Rating
Central Hardin HS	Victoria Steele	Bassoon	I	Bullitt East HS	Ethan Stansberry	Melodic Perc.	I
Gallatin Co. HS	Sam May	Oboe	II	Glasgow HS	Mason Wade	Melodic Perc.	I
M. L. Collins HS	Samuel Call	Bassoon	I	Henderson Co. HS	Matthew Turner	Melodic Perc.	I
M. L. Collins HS	Allison Hebdon	Oboe	I	Henderson Co. HS	Faith Anderson	Perc. Ens.	I
North Oldham HS	Cate Wollert	Oboe	II	Henderson Co. HS	Grace Phelps	Perc. Ens.	I
				Henderson Co. HS	Laine Skaggs	Perc. Ens.	I
				Henderson Co. HS	Matthew Turner	Snare Drum	I
				Hopkins Co. Central HS	Matt Daves	Snare Drum	I
				Mad. N. Hopkins HS	Dylan Trevathan	Snare Drum	I
				South Oldham HS	Elyse Portal	Melodic Perc.	I
				Southwestern HS	Garrett Burton	Snare Drum	I

SINGLE REED

School	Name	Event	Rating	School	Name	Event	Rating
Glasgow HS	L. Lessenberry	Bass Clarinet	I	Christian Acad. Louis.	Max Sahli	Violin	I
Glasgow HS	Noah Smith	Sax Quartet	I	M. L. Collins HS	Zach Budd	Cello	I
Hancock Co. HS	Lauren Lasley	Clarinet	I	M. L. Collins HS	Samuel Call	Viola	II
Henderson Co. HS	Erin O'Nan	Clarinet	I	Oldham Co. HS	Ben Crouch	Cello	I
Henry Co. HS	Wil Whitt	Alto Saxophone	II	Pulaski Co. HS	Arlen Faulkner	String Bass	I
Logan Co. HS	Kaylee McPherson	Clarinet	II				
Mad. N. Hopkins HS	H. Funkhouser	Alto Saxophone	II				
M. L. Collins HS	Carley VanMeter	Clarinet	I				
North Oldham HS	Annabelle Black	Alto Saxophone	II				
North Oldham HS	Sam Lemmons	Baritone Sax	II				
South Oldham HS	Nick Clark	Alto Saxophone	I				
South Oldham HS	Andrew Miles	Alto Saxophone	I				
Spencer Co. HS	Drake Watson	Clarinet	I				

BRASS

School	Name	Event	Rating	School	Name	Event	Rating
Bullitt East HS	Joshua Greive	Trumpet	I	Bryan Station HS	Faith Buede	Guitar	II
Central Hardin HS	Kevin Butora	Euphonium	I	Bryan Station HS	Andru Coffman	Guitar	II
Central Hardin HS	Noah Centers	Euphonium	I	Bryan Station HS	Logan Florence	Guitar	I
Central Hardin HS	Ray Ellis	Trombone	II	Bryan Station HS	Miguel Macias	Guitar	II
Central Hardin HS	Sebastian Petzinger	Trumpet	I	Bryan Station HS	Charlie Overman	Guitar	II
Central Hardin HS	Abigail Cross	Horn	I	Bryan Station HS	Thomas Seebold	Guitar	I
Eastern HS	Justin Martin	Euphonium	I	Bryan Station HS	Mark Smith	Guitar	I
Gallatin Co. HS	Breanna Rahe	Trumpet	II	Tates Creek HS	Luke Campbell	Guitar	I

JAZZ ASSESSMENT

Bill Kite, Manager

School	Event	Director	Rating
Apollo HS	Jazz Band	Andrew Clark	I
Bryan Station MS	Jazz Band	Frantz/Summers	I
Campbell Co. HS	Jazz 1	Nick Little	I

Performance Assessment Results, continued

Campbell Co. MS	Jazz Band	Stephen Dietsch	I
Conner HS	Jazz Ens.	Peterson/Chandler	I
Eastern HS	Jazz Band	Cory Zilisch	I
Edythe J. Hayes MS	Jazz Band	Lois Wiggins	I
George R. Clark HS	Jazz Ens.	Michael Payne	I
Henry Clay HS	Jazz Ens.	Bill Kite	I
Henry Clay HS	Lab Band	Bill Kite	I
Lafayette HS	Jazz Band	Strange/Lewellen	II
Lafayette HS	Jazz Ens.	Strange/Lewellen	I
McCracken Co. HS	Combo	Kelley Ray	I
McCracken Co. HS	McBig Band	Kelley Ray	I
Montgomery Co. HS	Jazz Band	Calvin Schmieg	I
Oldham Co. HS	Jazz Ens.	Brad Rogers	I
Paul G. Blazer HS	Jazz Band	Chris Whelan	II
Raceland-Worthington HS	Jazz Ens.	Allyson Martin	I
Scott Co. HS	Jazz 1	King/Bowling	I
Scott Co. HS	Jazz 2	King/Bowling	I
Southwestern HS	Jazz Band	Dan Carpenter	I
Western Hills HS	Jazz Ens. 1	Stephanie Wallace	I
Western Hills HS	Jazz Ens. 2	Stephanie Wallace	I

★ ★ WHEN ★ ★
MUSIC CAN BRING A
NATION
TO ITS FEET
IT'S WORTH ADVOCATING FOR

REGISTER TODAY

JUNE 27-JULY 1

#NAfMEHD17


 COLLEGIATE


hillday.nafme.org

Hurst Music

101 N. Mount Tabor Rd.
 Lexington KY 40509
(859)-335-0500

- RENTALS
- ACCESSORIES
- BAND & STRING REPAIRS
- SHEET MUSIC
- LESSONS




"Long after the toys of childhood are gone, the gift of music remains."

Hurst Music would like to take this opportunity to thank all music educators across Kentucky for their hard work, dedication, and commitment in providing students a solid musical foundation that will benefit them for the rest of their lives.

Thank You

Capture the Night!



Purchase your concert photos in
print or digital download at
www.kmea.org!



Photos available
for viewing on February 28, 2017.

Proceeds donated to the Jim and Carolyn Fern Music Education Scholarship Fund.



2017 KMEA All State CD /DVD Order Form

These special performances are being digitally recorded and CDs & DVDs will be available to order. The DVD will be a High Definition five camera production with CD quality sound. (3 of the cameras are on stage for close-ups) Please fill out the order form below and bring it to the CD/DVD Order Table outside the concert venue or mail it to:

Soundwaves Recording
4708 Surfside Drive
Huron Ohio 44839

You can order online at “soundwaves.org” Search: KMEA 2017
 phone (419) 433-4918 fax (567) 623-6024 email: mail@soundwaves.org

Your recordings will be shipped to you within six weeks of the concerts.

You may pay with check (payable to “Soundwaves”), Visa or MasterCard

Concert & Cost	Quantity CD \$17.00	Quantity DVD \$30.00	CD / DVD Set \$40.00	Total Cost
KMEA Children’s Chorus, Jr High Mixed Chorus & Treble Chorus	X \$17	X \$30	X \$40	
KMEA All State Men’s Chorus, Women’s Chorus, & Mixed Chorus	X \$17	X \$30	X \$40	
KMEA All-State Concert Band & Symphonic Band	X \$17	X \$30	X \$40	
KMEA Commonwealth Strings & All-State Symphony Orchestra	X \$17	X \$30	X \$40	
KMEA All-State Jazz Ensemble I & Jazz Ensemble II	X \$17	X \$30	X \$40	
KMEA All-Collegiate Choir	X \$17	X \$30	X \$40	
KMEA Intercollegiate Band	X \$17	X \$30	X \$40	
KMEA Intercollegiate Jazz	X \$17	X \$30	X \$40	
\$4.00 Shipping any quantity	---- >>>	----->>>	----->>>	\$4.00
	Grand Total			

Please print

Name:	
Address:	
City:	
State:	Zip Code:
Phone or email:	
(we will use this only if there is a problem with your order)	

For charge cards fill out & sign section below.

_____ - _____ - _____ - _____

exp date: _____ Signature _____

3 digit security code ___ ___

Name of person on charge card:



UNIVERSITY *of the* CUMBERLANDS

MUSIC SCHOLARSHIP AUDITIONS

Email
jeff.smoak@ucumberlands.edu
to schedule your
scholarship audition

www.ucumberlands.edu/music
606.539.4332



Visit our website!



University of the
Cumberlands
Music Department

Summer 2017 Advertisers

Bob Rogers Travel - Inside Front Cover
Campbellsville University - 8
Eastern Kentucky University - 2
Hurst Music - 36
Miles Ahead Music - 20
Morehead State University - Inside Back Cover
Murray State University - Back Cover
Music Central, Inc. - 12
NAfME - 36
Royal Music - 15
University of Kentucky School of Music - 6
University of Louisville School of Music - 4
University of the Cumberlands - 39
Western Kentucky University - 9
Yamaha Corporation of America - 40

Inquiries regarding advertising rates, ad sizes, and
technical specification should be sent to:

Melissa Skaggs

P.O. Box 1058

Richmond, KY 40476-1058

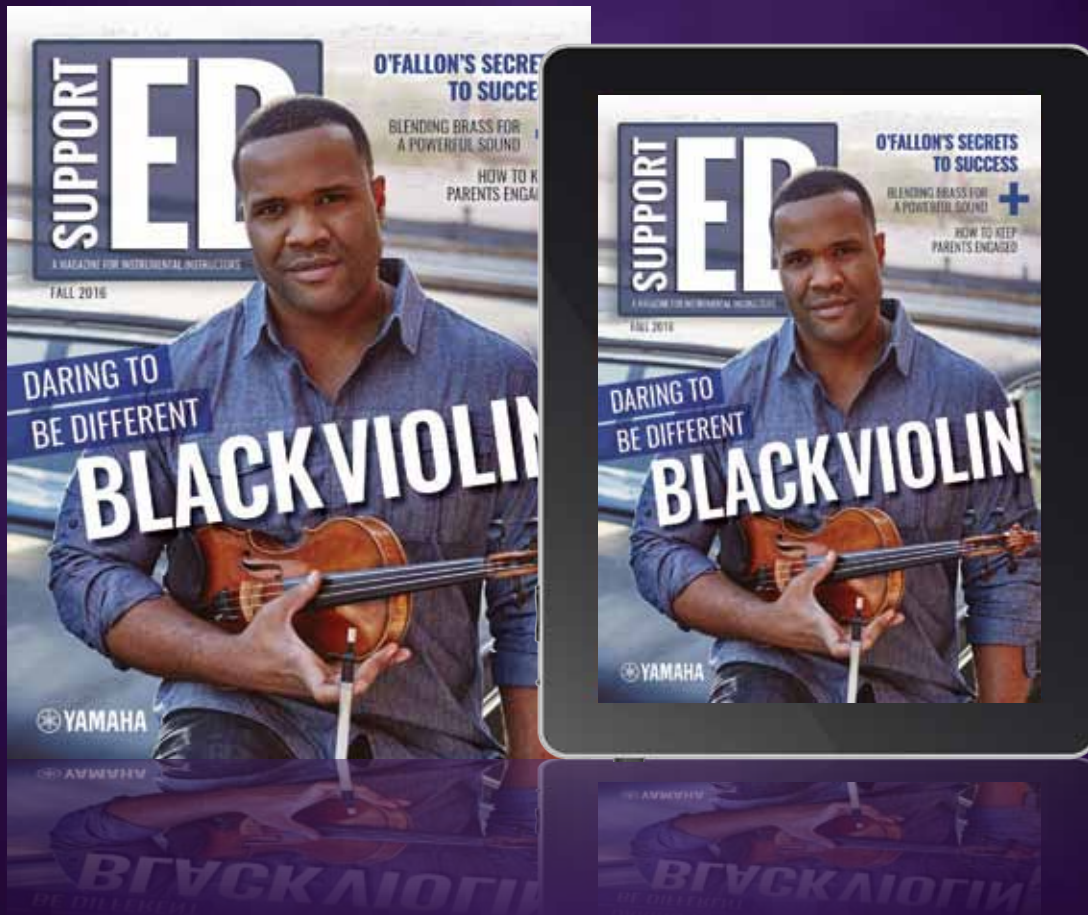
tel: 859-626-5635; fax: 859-626-1115

email: melissa@kmea.org

Thank you, 2016-17 Advertisers!

Bob Rogers Travel
Box 5 Media
Campbellsville University
Eastern Kentucky University
Galt House
Hurst Music
Messiah College
Miles Ahead Music
Morehead State University
Murray State University
Music Central, Inc.
NAfME
Royal Music
Southern Illinois University
University of Kentucky School of Music
University of Louisville School of Music
University of the Cumberlands
Western Kentucky University
Yamaha Corporation of America

LEARN + INSPIRE + LEAD



SIGN UP TODAY!

FREE FOR MUSIC EDUCATORS | DIGITAL EDITION 4X A YEAR | PRINT EDITION 2X A YEAR

www.YamahaSupportED.com



SHARING PASSION & PERFORMANCE

@YamahaMusicUSA



MAJOR IN YOUR TALENT.



EXPLORE MUSIC OPPORTUNITIES AT MSU.

MASTER OF MUSIC PROGRAM OFFERS A NEW ONLINE OPTION

Designed for the practicing music educator, MSU's Master of Music with a Concentration in Music Education provides a curriculum that offers both accessibility and flexibility, including the option to complete this area of concentration completely online. For more information, contact d.oyen@moreheadstate.edu.

NEW COMMERCIAL MUSIC STUDIES PROGRAM IS ACCEPTING APPLICANTS

MSU's new Bachelor of Arts in Music – Commercial Music Studies program allows you to study the business of music as you develop your individual instrumental or vocal skills. The program provides a blending of music study in a variety of non-classical and non-ethnic music styles. For more information, contact g.ginn@moreheadstate.edu.

SUMMER ARTS ACADEMY • JUNE 4-10, 2017

Morehead State University's Summer Arts Academy offers a unique opportunity this summer in experiencing music, theatre, dance, art and design, and creative writing. You will receive individual and group instruction in your area and will also be offered elective study. The academy will feature faculty recitals and activities highlighting creative writing, as well as art and design. The academy is intended for high school students from rising freshmen through graduating seniors. For more information, contact g.wing@moreheadstate.edu.



**MOREHEAD STATE
UNIVERSITY**

MUSIC, THEATRE & DANCE

Baird Music Hall, MSU
Morehead, KY 40351
Phone: 606-783-2473
Fax: 606-783-5447
mtd@moreheadstate.edu

www.moreheadstate.edu/mtd

MSU is an affirmative action, equal opportunity, educational institution.

MURRAY STATE UNIVERSITY DEPARTMENT OF MUSIC

Festival Dates:

Sept. 30, 2017

Festival of Champions

Oct. 20, 2017

Quad State Strings

Nov. 5-6, 2017

Quad State HS Choir

Nov. 19-20, 2017

Quad State MS Band

Feb. 22-24, 2018

Quad State HS Band

Feb. 27, 2018

Quad State MS Choir

Mar. 30-31, 2018

Aebersold Jazz Festival



For more information call: (270) 809-4288

Email: pwurgle@murraystate.edu

www.murraystate.edu/music