



## 2012 KJHC Audition Requirements

**FAILURE TO FOLLOW THESE DIRECTIONS WILL AUTOMATICALLY DISQUALIFY THE AUDITION.**

1. Record all students auditioning for the same vocal part on one tape/CD. Label each tape/CD with the school name and vocal part. Boys with unchanged voices may audition for soprano or alto parts.
2. The music teacher must lead the audition. A guest pianist is allowed.
3. Once the audition begins, there will be no talking except for selection identification. The teacher/pianist may not play or sing the student's part while the student is singing. The student must perform the unaccompanied prepared solo as written and in the designated key (*specific voice part versions of the solo are at the bottom of this page*). Any deviation of this procedure will result in the disqualification of the student.
4. PLEASE be very selective and send recordings of only your BEST singers! Please do not waste the judges' time by sending in tapes you would not want to hear. Be honest with your students if you know that their recording is not up to all-state standards.
5. Please avoid a noisy recording setting. Place the recorder's microphone near the piano, teacher, and student so that all parts can be heard. Do NOT place the recorder's microphone on the piano as this usually distorts the recording.
6. If using a cassette tape for recording, the HIGH BIAS cassette tapes is best for music reproduction results. Normal bias tapes are more easily distorted by music.
7. Follow the taping directions listed in the audition procedures. Remember to perform all audition sections as written.
8. After completing the audition, listen to the recording to make certain the audition has been recorded. After reviewing, be sure to forward the tape to leave a 5-10 second space after each audition to avoid overtaping and/or deleting the previous audition.
9. When finished recording all of your singers – please – REWIND the tape.
10. ANY RECORDING RECEIVED AFTER THE TAPE/CD SUBMISSION DEADLINE WILL NOT BE ASSESSED. The audition tapes/CDs must reach the KJHC Coordinator's house by the evening of the deadline date.

**Mail 1 copy of the audition form with payment of total audition fees to the KMEA OFFICE and 1 copy of the audition form with tapes/CDs to the KJHC Coordinator.**

Kentucky Music Educators Association  
Dr. John Stroube—KJHC Audition  
P.O. Box 1058  
Richmond, KY 40476-1058

Kentucky Junior High Chorus  
Byron M. Lucas, Coordinator  
125 Owl Drive  
Bowling Green, KY 42101

**Remember: Any package requiring a signature will be declined and returned to the sender.**

Record students who sing the same voice part on one tape/CD. Leave 5-10 sec space between auditions

- Label the Tape/CD with the school name and vocal part.
- Before recording any students, the teacher says the school name and the vocal part.
- Before each student sings, the teacher says the student's name and vocal part.
- The teacher may not instruct the student or sing with the student during the audition.

**Students must sing the following items in the order listed below. Singing out of order or skipping any part will result in the disqualification of the singer.**

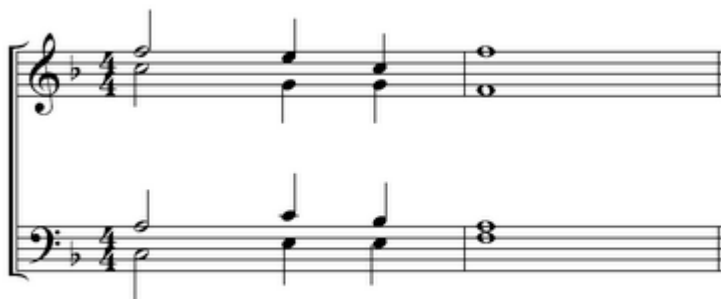
- ❖ An *UNACCOMPANIED* major scale ascending and descending using syllables, numbers, or on "la, loo, or doo." The teacher plays *ONLY* the beginning pitch of the scale.  
Soprano: G or F Major    Alto: D Major    Tenor: E-Flat or F    Major Bass: C Major
- ❖ Harmonic Pattern Number 1a & 1b (2-Part)—students sing both parts
  - 1a: The teacher says "upper part" then plays the part for the student. The student then sings the upper part on "loo" while the teacher plays the lower part.
  - 1b: The teacher says "lower part" then plays the part for the student. The student then sings the lower part on "loo" while the teacher plays the upper part.

PATTERN 1a & 1b



- Pattern Number 2 —student sings only the auditioned part: The teacher says the name of the Chosen vocal part & then plays the part for the student. Student then sings that part on "loo" or "doo" while the teacher plays the remaining 3 parts.

PATTERN 2



- ❖ Prepared Solo (see versions below): First Verse of "America, The Beautiful"  
Unaccompanied—Teacher plays the beginning pitch and tonic chord only of the required key.

Soprano: Key of C major

Tenor: Key of C or D-Flat major

Alto: Key of A major

Baritone: Key of A major

Soprano

# America The Beautiful

Bates/Ward  
arr. T.A. Miller

*mf*



Oh Beau - ti - ful for spa - cious skys for am - ber waves of grain. For pur - ple moun - tains

6



ma - jes - ties a - bove the frui - ted plain! A - mer - i - ca A - mer - i - ca God shed his grace on

12



thee, and crown thy good with bro - ther - hood from sea to shi - ning sea!

Alto

# America The Beautiful

Bates/Ward  
arr. T.A. Miller

*mf*

Oh Beau - ti - ful for spa - cious skys for am - ber waves of grain. For pur - ple moun - tains

6

ma - jes - ties a - bove the frui - ted plain! A - mer - i - ca A - mer - i - ca God shed his grace on

12

thee, and crown thy good with bro - ther - hood from sea to shi - ning sea!



Tenor  
Db Major

# America The Beautiful

Bates/Ward  
arr. T.A. Miller

mf

> mf

Oh Beau-ti-ful for spa-cious skys for am-ber waves of grain. For pur-ple moun-tains

6

f

ma-jes-ties a-bove the frui-ted plain! A-mer-i-ca A-mer-i-ca God shed his grace on

12

sempre f

thee, and crown thy good with bro-ther-hood from sea to shi-ning sea!

Bass-Baritone

# America The Beautiful

Bates/Ward  
arr. T.A. Miller

Oh Beau - ti - ful for spa - cious skys for am - ber waves of grain. For pur - ple moun - tains

ma - jes - ties a - bove the fru - ited plain! A - mer - i - ca A - mer - i - ca God shed his grace on

thee, and crown thy good with bro - ther - hood from sea to shi - ning sea!

## Kentucky All State Junior High Chorus Scoring Guide

### Unaccompanied Major Scale Ascending and Descending

Pitch Accuracy	Tone Quality	Total Rating
6 pts	6 pts	12 pts

### HARMONIC PATTERNS

Pattern	Rhythmic Accuracy	Melodic Accuracy	Tone Quality	Overall Rating
1a	5 pts	5 pts	5 pts	15
1b	5 pts	5 pts	5 pts	15
2	5 pts	5 pts	5 pts	15
Totals	15	15	15	45

### PREPARED SOLO

Vocal part must be performed as written. There must be no piano assistance.

Steady Tempo	Pitch Accuracy	Rhythmic Accuracy	Tone Quality	Expressive Elements	TOTAL
25	25	25	25	25	125

### OVERALL SCORE

Major Scale Score	Harmonic Pattern Score	Prepared Solo Score	Overall Score Total
12	45	125	182